

## Calculator Questions

Edexcel

1.

Riya and her friends pay bills each month.

Type of bill: Energy  
Date: 18<sup>th</sup> of the month  
Amount: £55

Type of bill: Water  
Date: 10<sup>th</sup> of the month  
Amount: £19

Type of bill: Internet  
Date: 21<sup>st</sup> of the month  
Amount: £27

Riya wants to show this information in a table.

**Organise this information in a table.**

(1)

Show your answer in the box below.

Type of bill	Date	Amount
Energy	18 <sup>th</sup>	£55
Water	10 <sup>th</sup>	£19
Internet	21 <sup>st</sup>	£27

Entry 3 Representing Information Exam Questions

NCFE

2.a)

Debra looks at film reviews.

Each film is rated 1, 2, 3, 4 or 5 stars.

These are the ratings.

1	4	4	5	3	1	4	2	4	2
2	1	3	5	3	3	5	1	3	4
3	4	3	4	4	5	3	5	2	4

Complete the frequency table to show this information.

[2 marks]

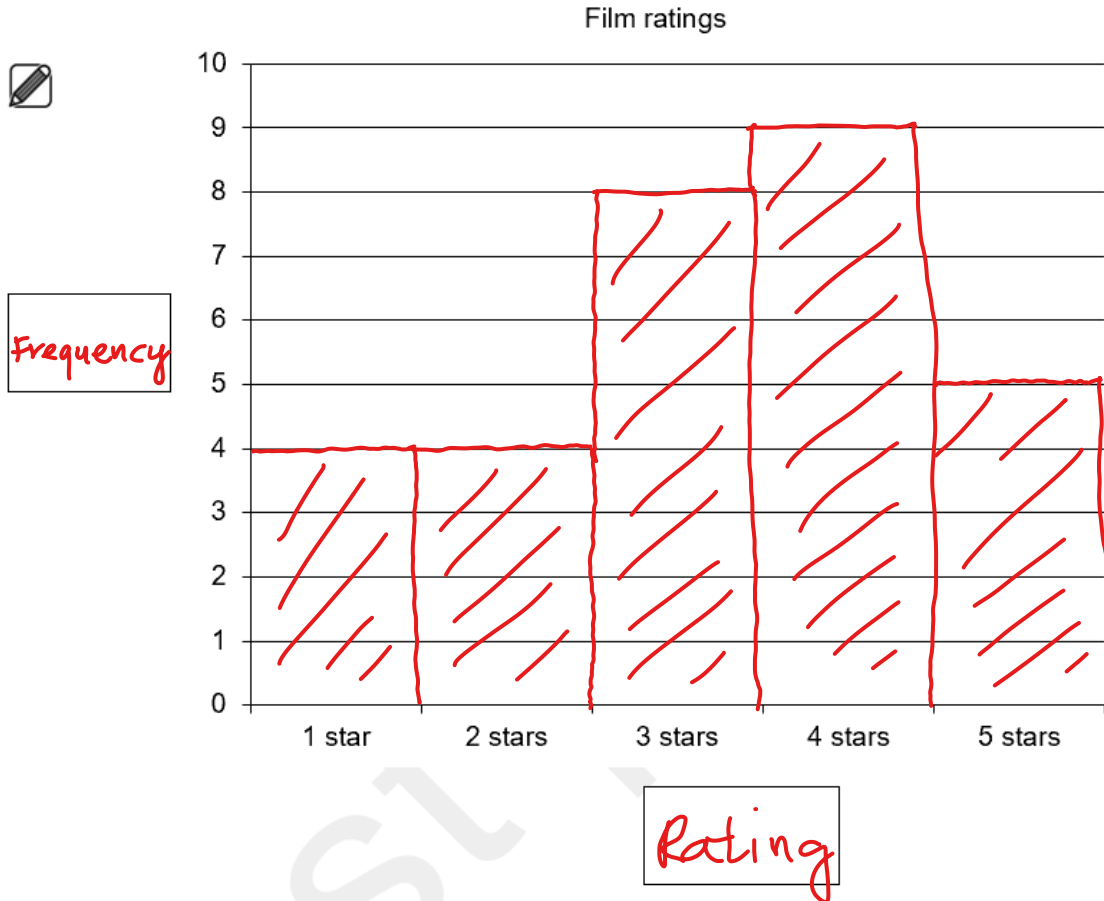
Rating	Frequency
1 star	4
2 stars	4
3 stars	8
4 stars	9
5 stars	5

Entry 3 Representing Information Exam Questions

b)

Put the information from your frequency table into a bar chart.

[3 marks]



3.

Amy counts the hours that people work.

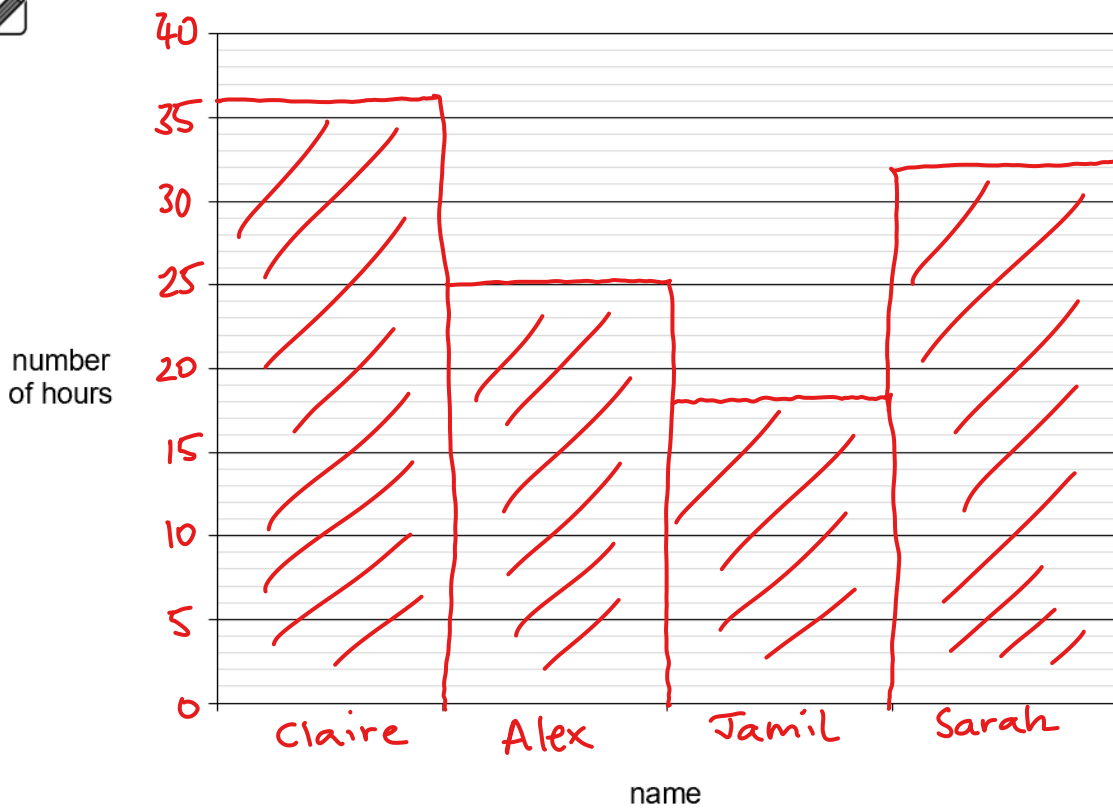
Claire	36 hours
Alex	25 hours
Jamil	18 hours
Sarah	32 hours

She wants to show the results in a bar chart.

Complete the bar chart.

[4 marks]

Hours people work



4.a)

The vet writes down the weights of another dog over five weeks.

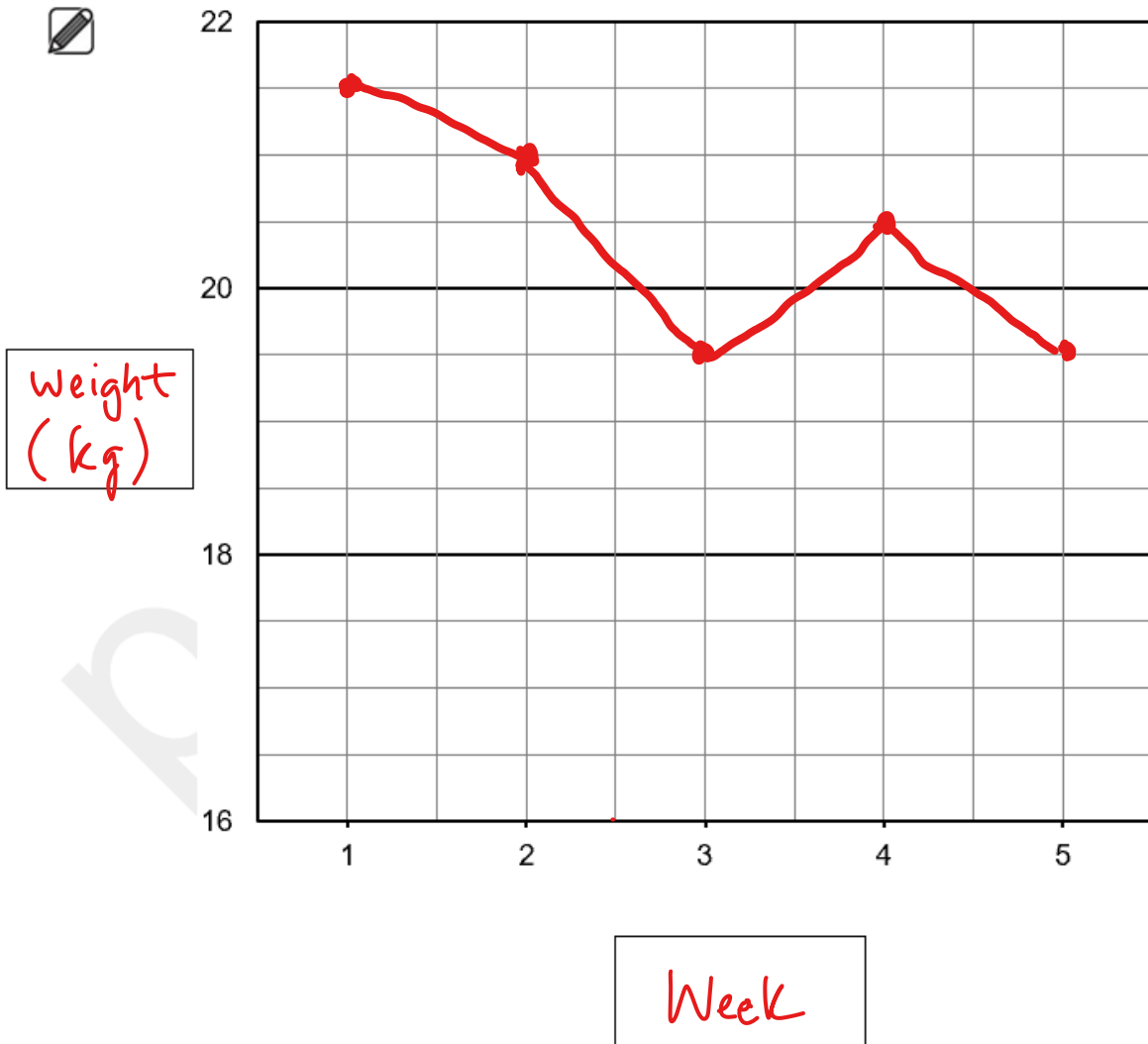
Week	Weight (kg)
1	21.5
2	21
3	19.5
4	20.5
5	19.5

The vet wants to show the results in a line graph.

Complete the line graph.

[3 marks]

Weight of the dog each week



b)

Between which weeks did the dog's weight increase?

**[1 mark]**

3 and 4

City & Guilds

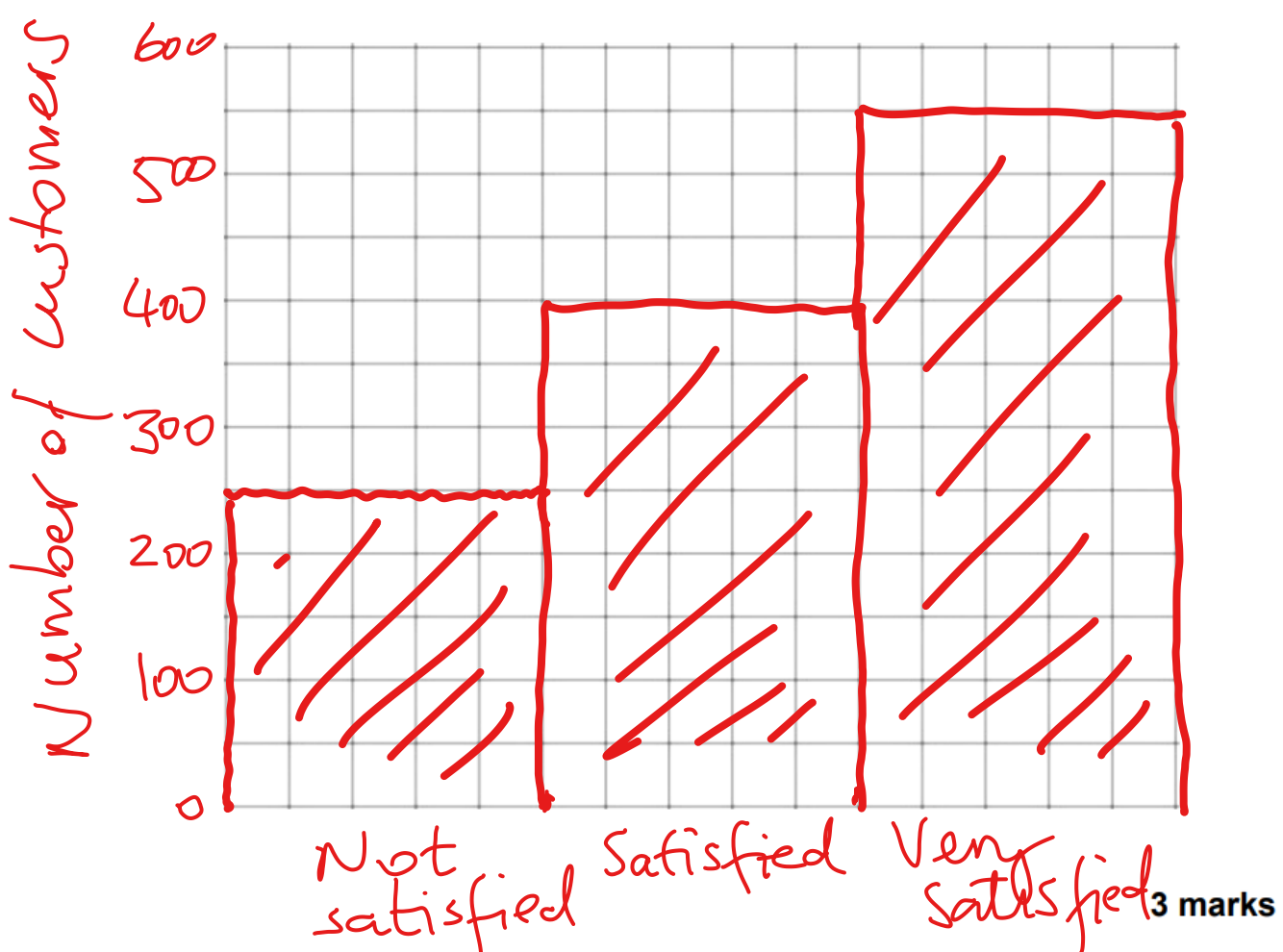
5.

The manager of the Departure Lounge carries out a satisfaction survey about the services at the airport.

She needs to draw a bar chart to show these results.

Number of customers	
Not satisfied	250
Satisfied	400
Very satisfied	550

Draw a bar chart to show this information.  
Put labels on your chart.



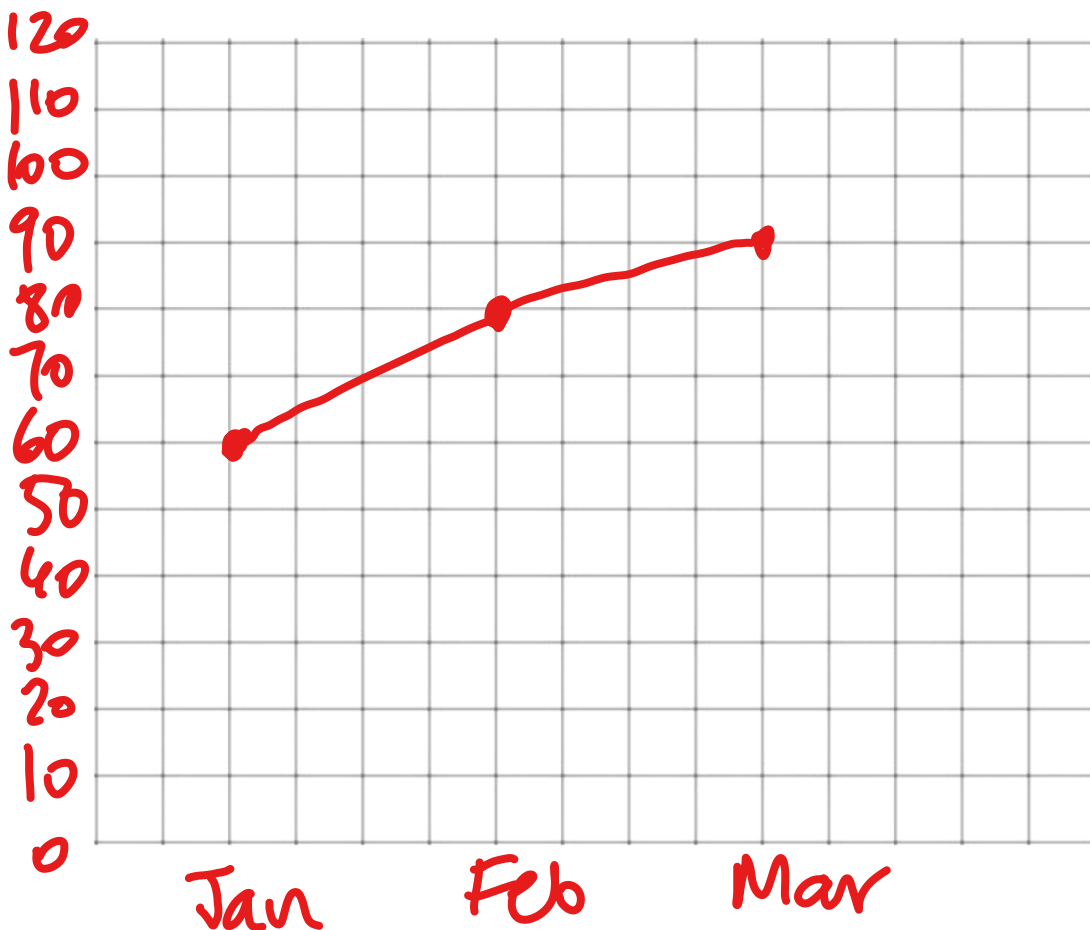
6.

The manager of a bed store needs to draw a **line graph** to show how many beds they sold in the last three months.

Month	Beds sold
January	60
February	80
March	90

Draw a **line graph** to show this information.

Put labels on your graph.



3 marks



7.

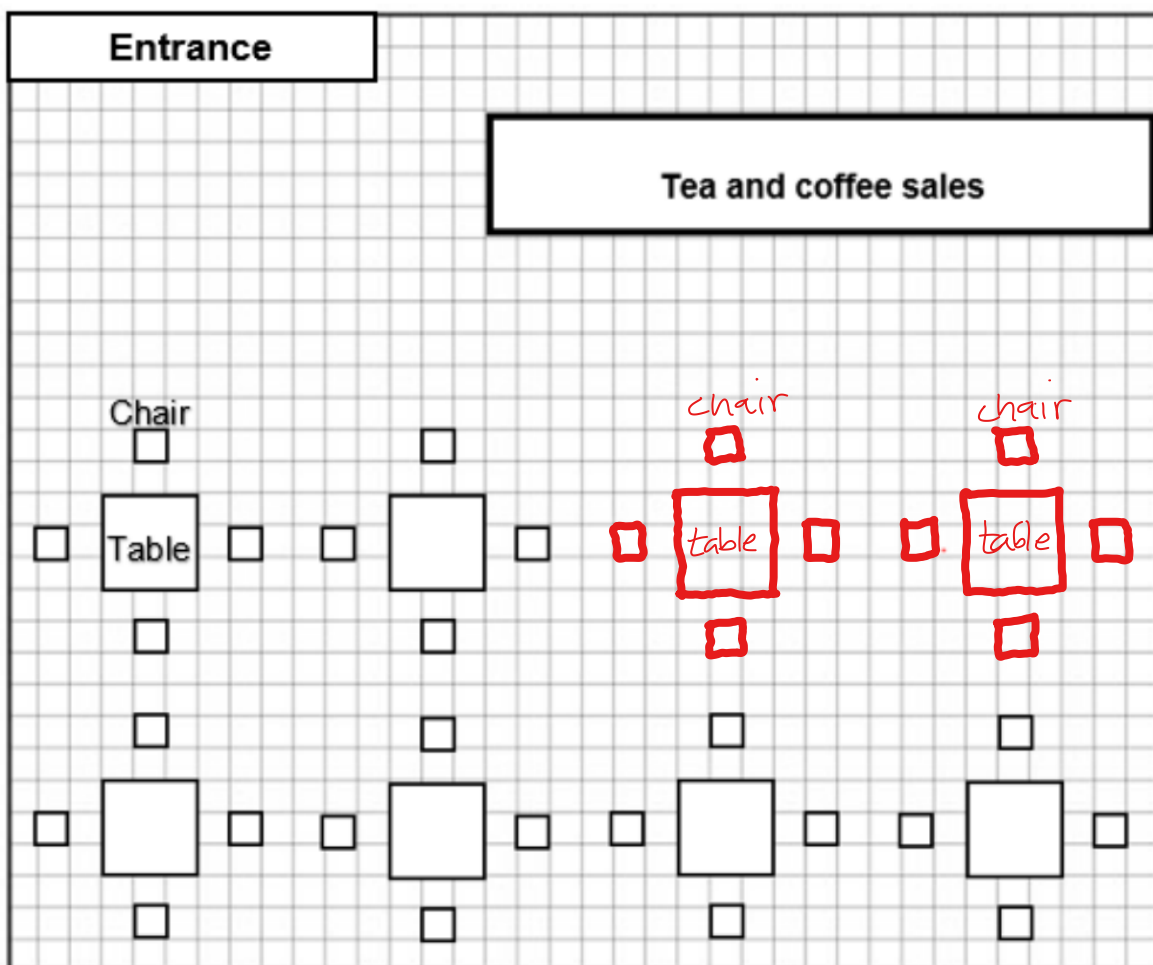
There will be Afternoon Tea at the community centre.  
The organiser needs to set up the room.

He starts to draw a plan to show where he wants the tables and chairs to go.

He needs **two more tables and eight chairs**.

They need to be the same size and the same distance apart as the others.

Plan of the room



Complete the plan to show where the tables and chairs will go.  
**Put labels on your diagram.**

**4 marks**

8.a)

A farm held an event to raise money for charity.  
The event lasted for 3 days.

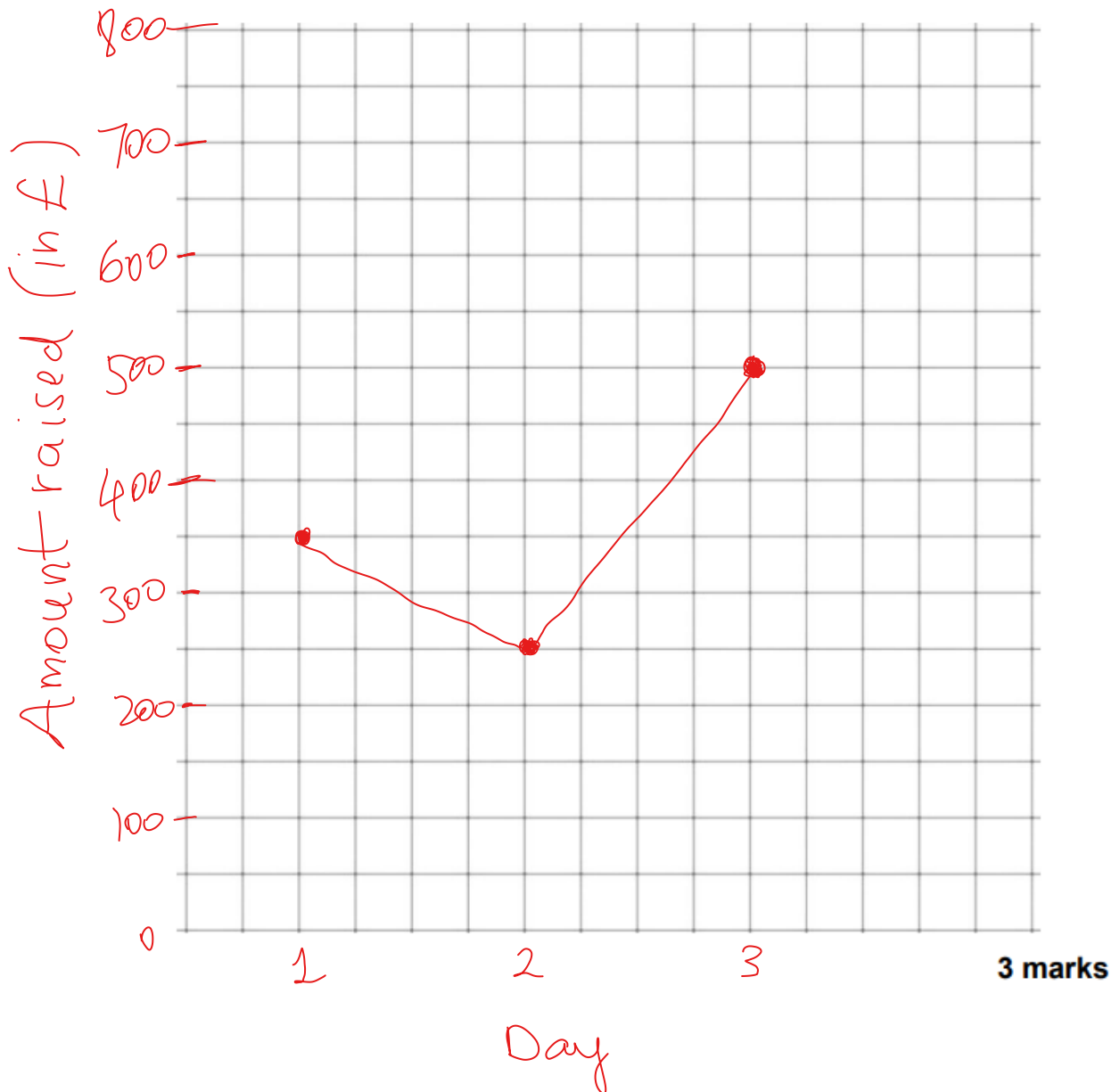
The farm manager kept a record of the amount of money raised.  
She asks her assistant to draw a line graph to show how much money was raised each day.

**Day 1 £350**

**Day 2 £250**

**Day 3 £500**

Draw a line graph to show this information.  
Put labels on your graph.



b)

The farm manager asks the assistant which day made the most money.

What does the assistant tell him?

3

1 mark

9.

(4 marks)

Sam wants to show staff how sales of different items compare. She makes a list of the sales of these items from one day. This is her list:

- Books - £27
- Clothes - £43
- Games - £38

Create a **graph or chart** to show this information in numerical order.

