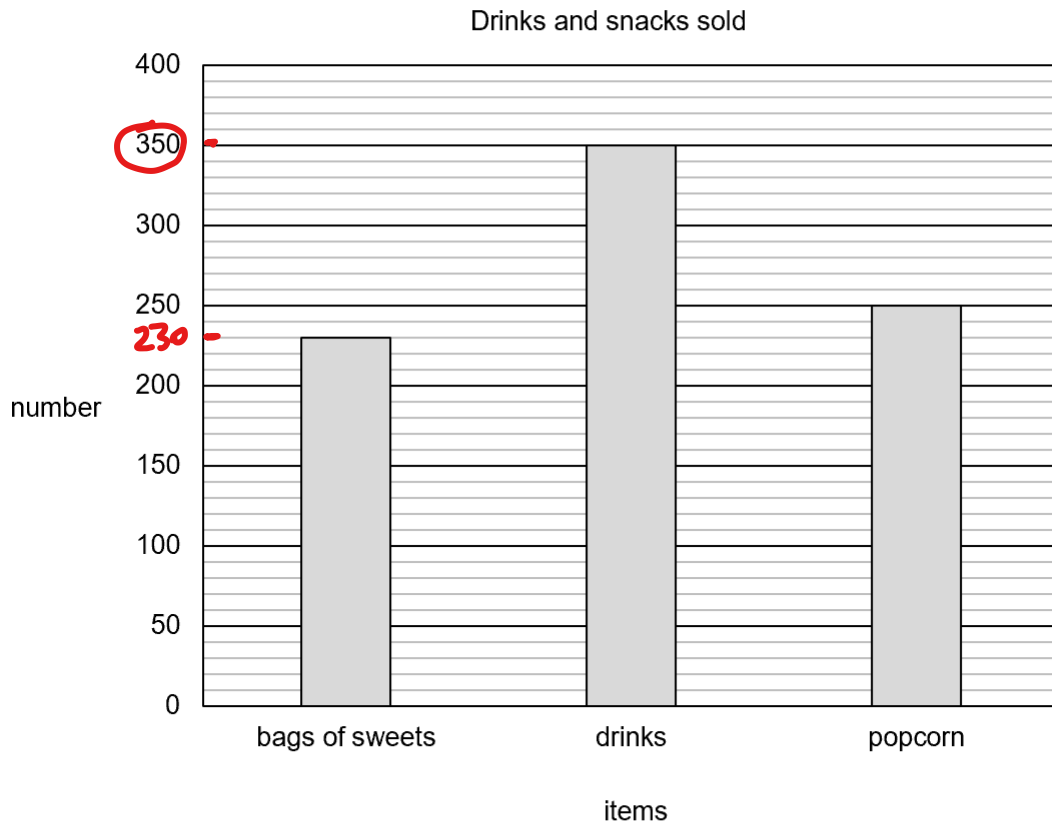


Non-calculator Questions

NCFE

1.

This bar chart shows what Paulo sold this weekend.



He sold more drinks than bags of sweets.

How many more?

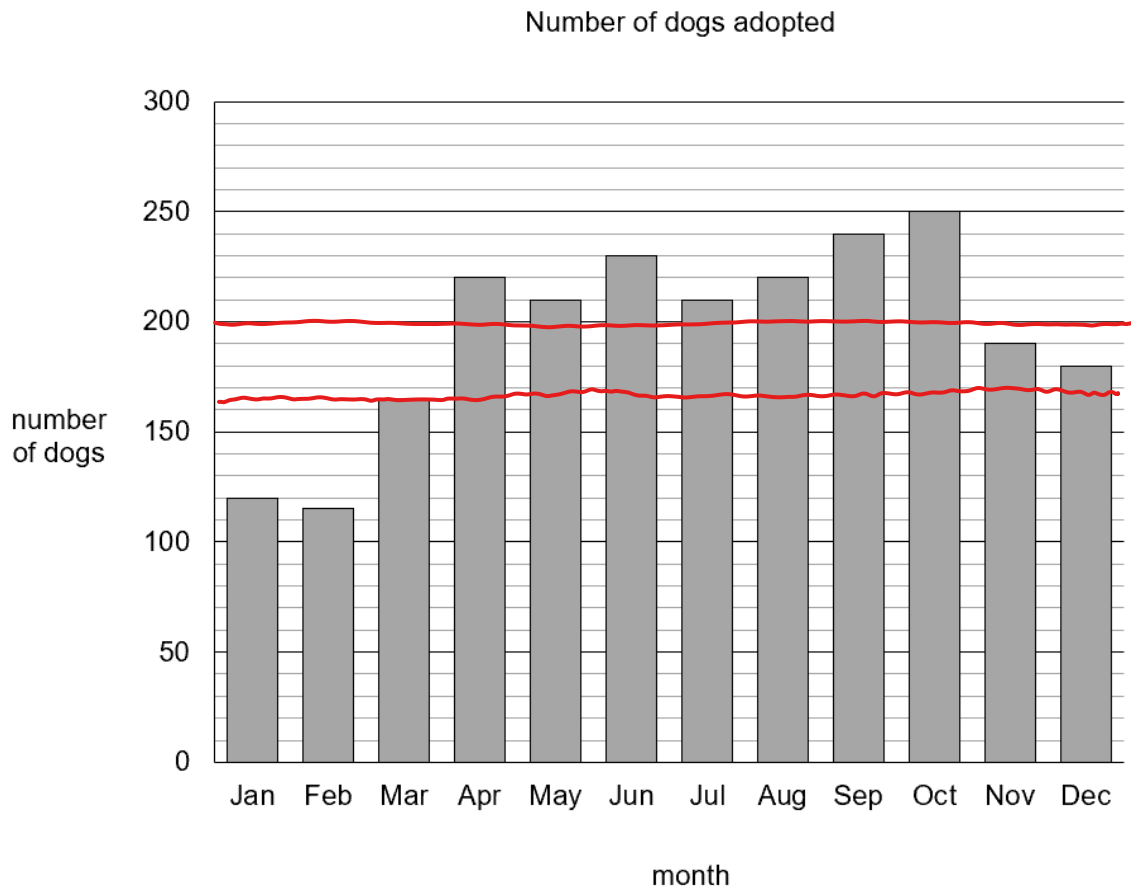
[1 mark]



$$350 - 230 = 120$$

2.a)

This graph shows the number of dogs adopted from the shelter each month.



In how many months were there fewer dogs adopted than in March?

[1 mark]



2

b)

In how many months were there more than 200 dogs adopted?

[1 mark]



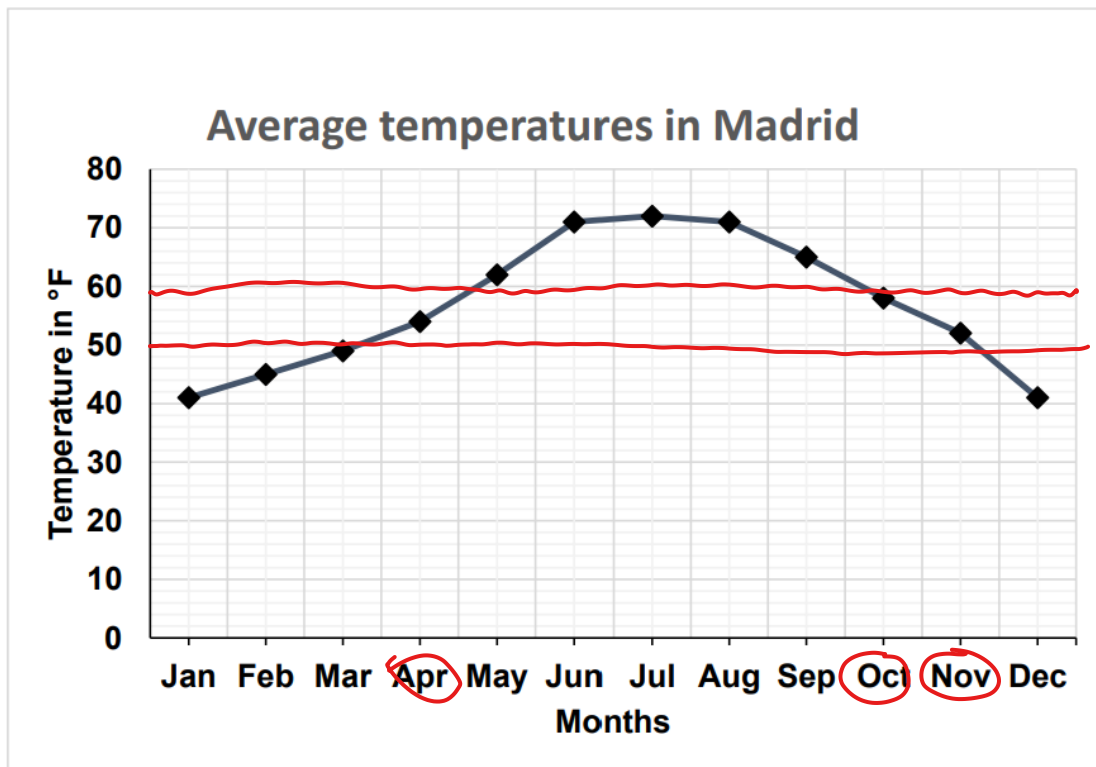
7

City & Guilds

3.

This line graph shows the temperatures in Madrid last year.

A holiday maker wants to go to Madrid when the temperature is between 50°F and 60°F.



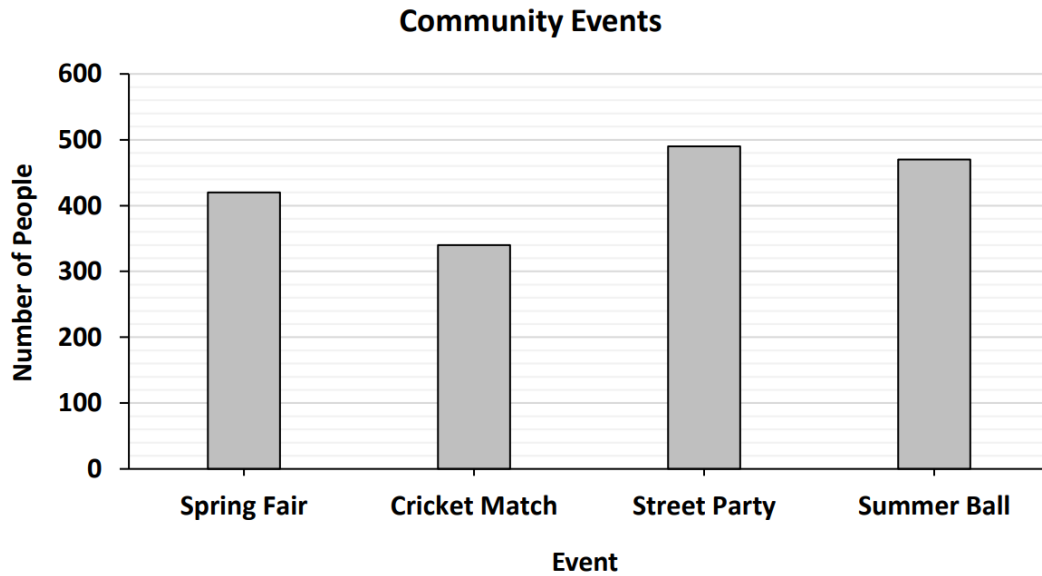
In which months should the holidaymaker go to Madrid?

April, October and November

1 mark

4.

This chart shows the numbers of people attending different community events last year.



Which **two** events had the **least** number of people attending?

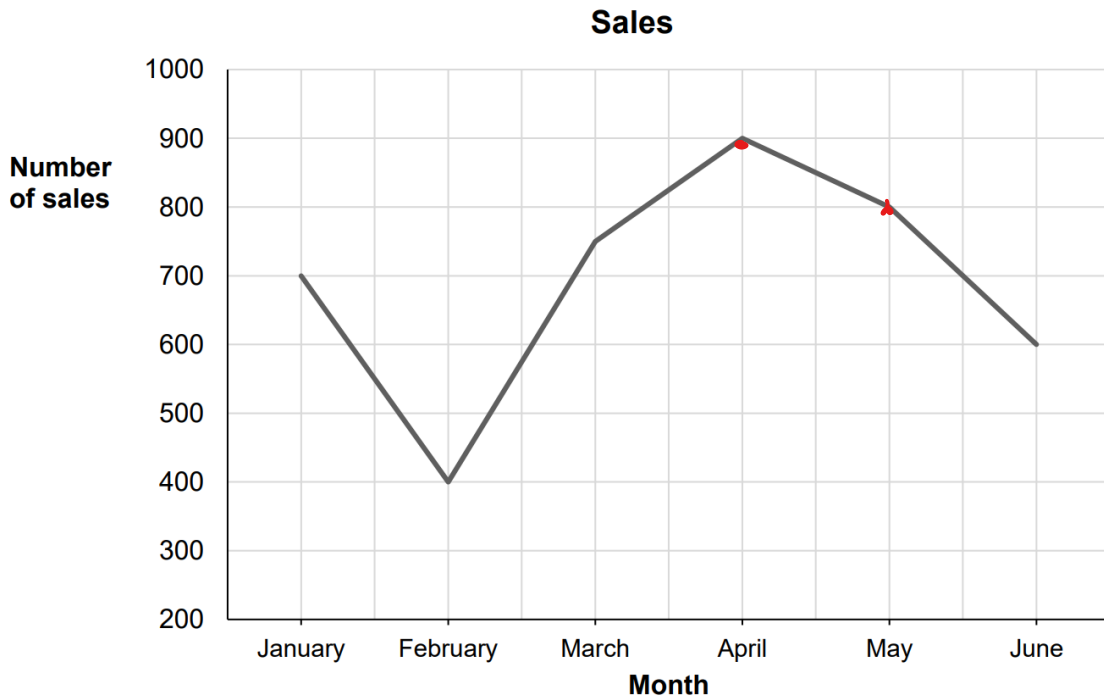
Spring Fair

Cricket Match

1 mark

5.

This graph shows the sales for a shop for six months.



In which **two** months did the shop have its two highest sales?

April

May

1 mark

Calculator Questions

Edexcel

1.

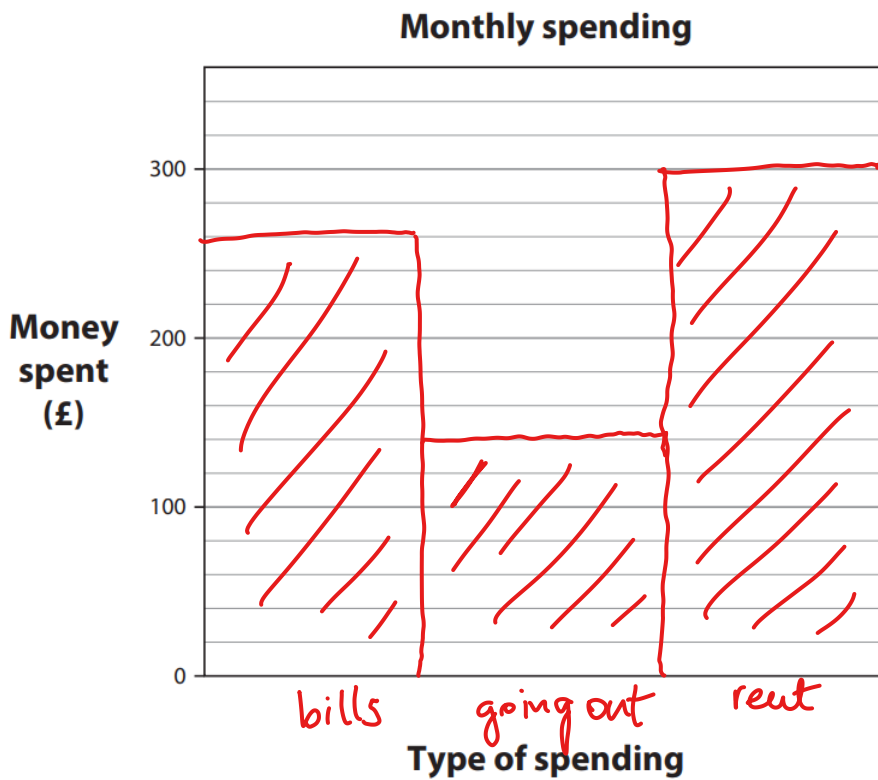
Riya shows her monthly spending in a table.

Type of spending	Money spent
bills	£260
going out	£140
rent	£300

The chart shows the monthly spending.

Complete the chart and use correct labels.

(1)



2.

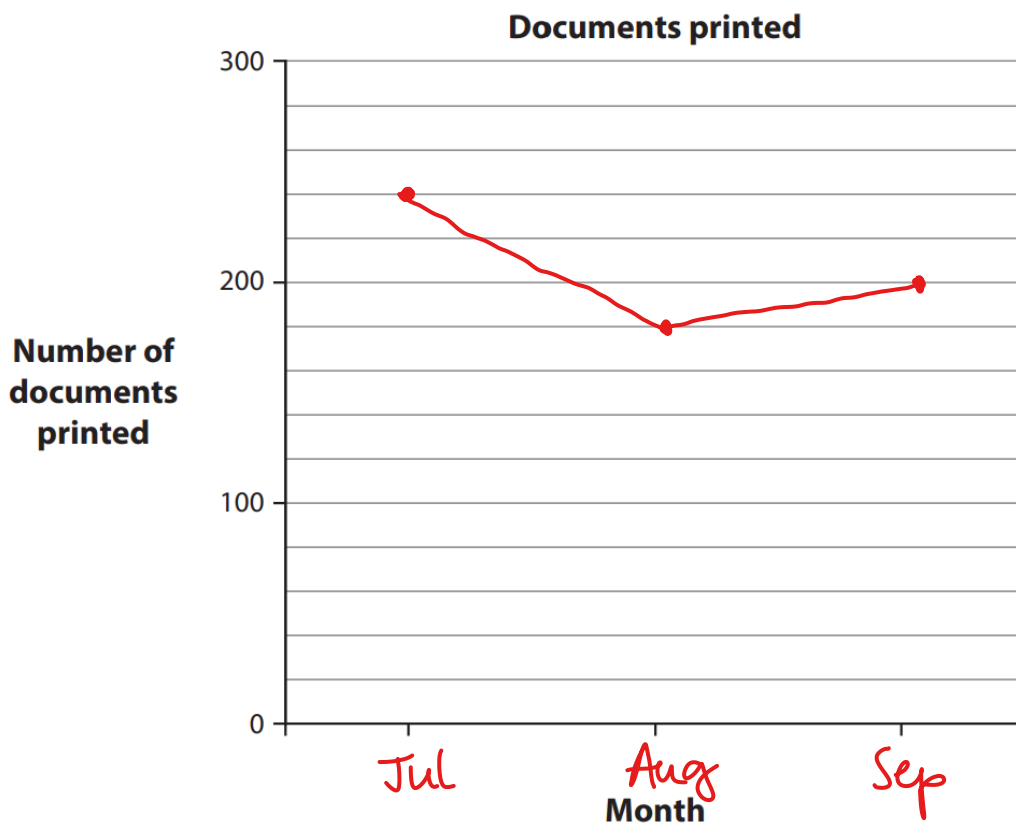
Bret has information on the number of documents printed.

Documents printed	
Jul	240
Aug	180
Sep	200

Bret needs a line graph to show the information.

Complete the line graph and use correct labels.

(1)

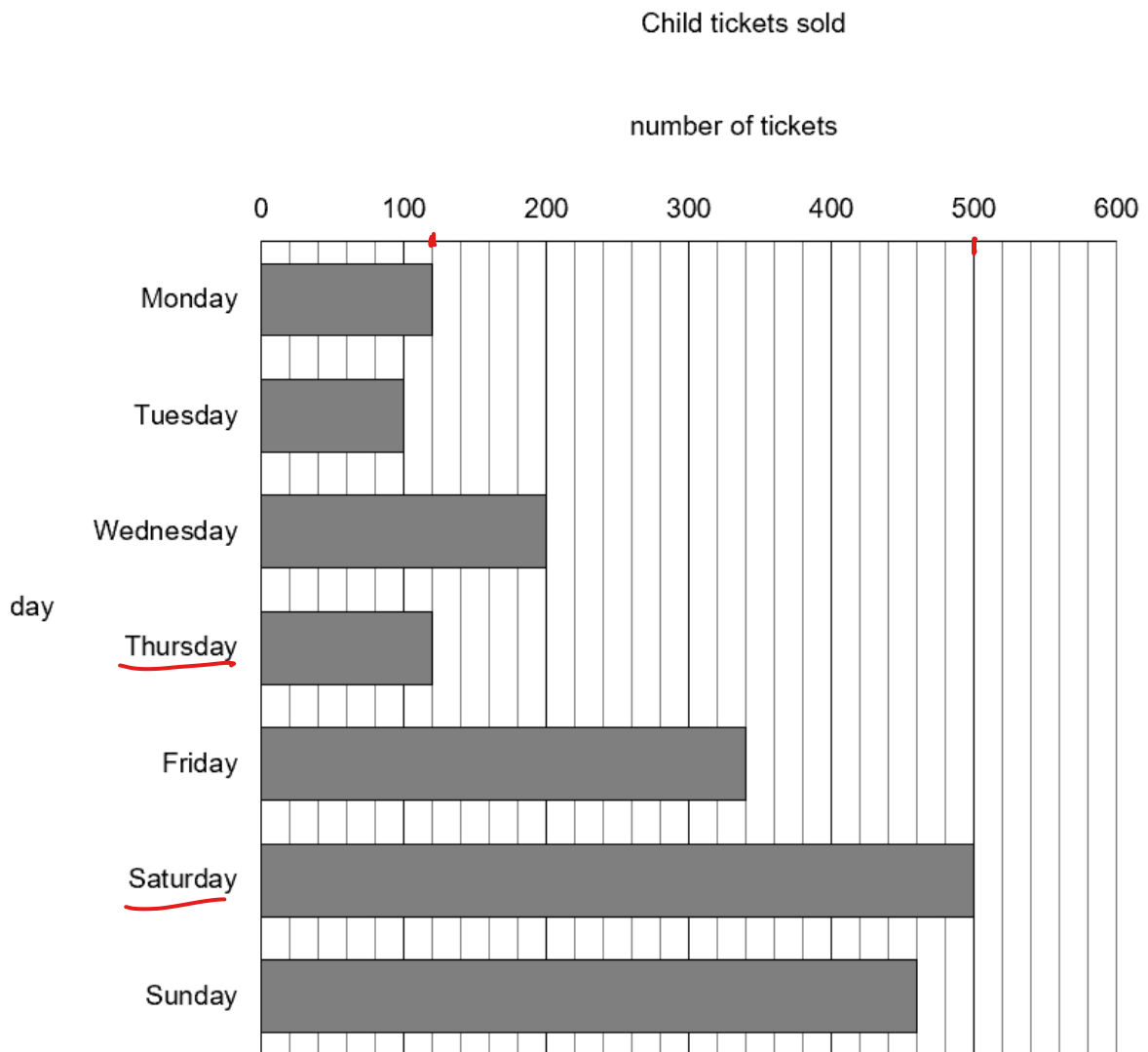


NCFE

3.

Debra checks the number of child tickets sold.

This bar chart shows how many were sold each day last week.



How many more child tickets were sold on Saturday than were sold on Thursday?

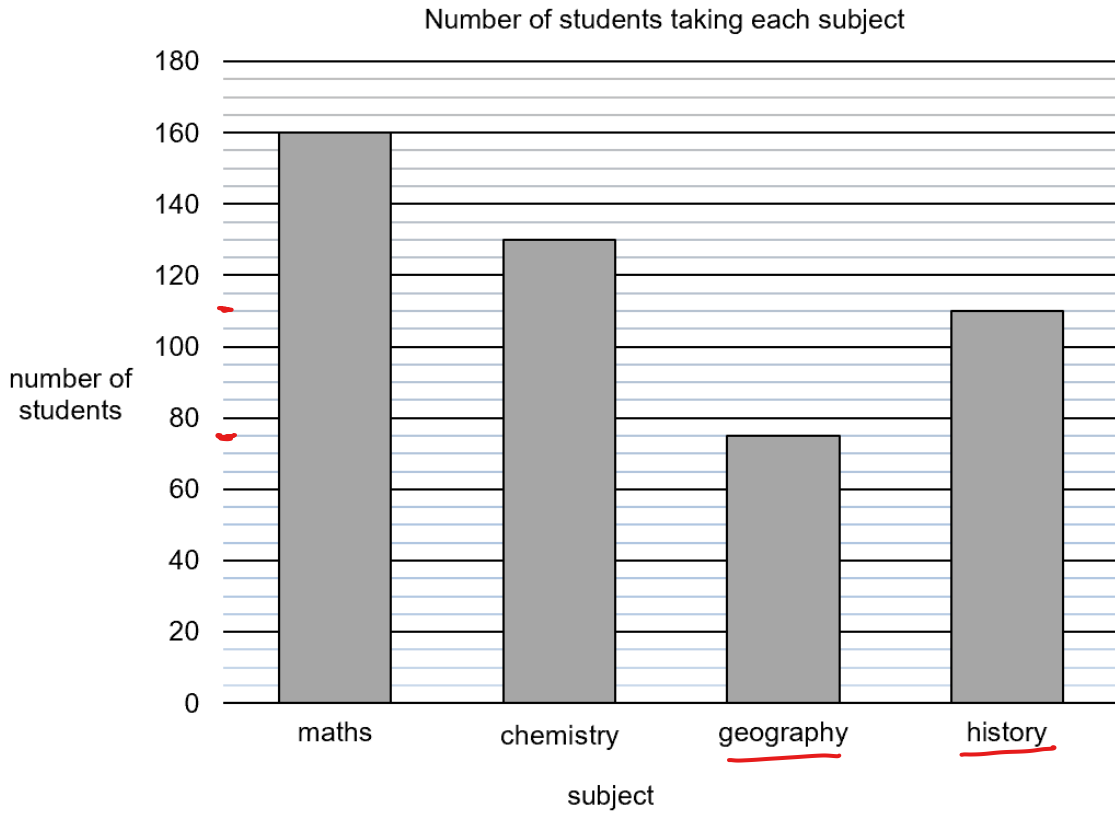
[2 marks]



$$500 - 120 = 380$$

4.

This chart shows the numbers of students taking some subjects.



Alex thinks 40 more students take history than geography.

Is he correct?

Give a reason for your answer.

[2 marks]



$110 - 75 = 35$

No

b)

This list shows the numbers of students taking other subjects.

biology	120
physics	90
art	75
drama	45

Complete the table to show this information.

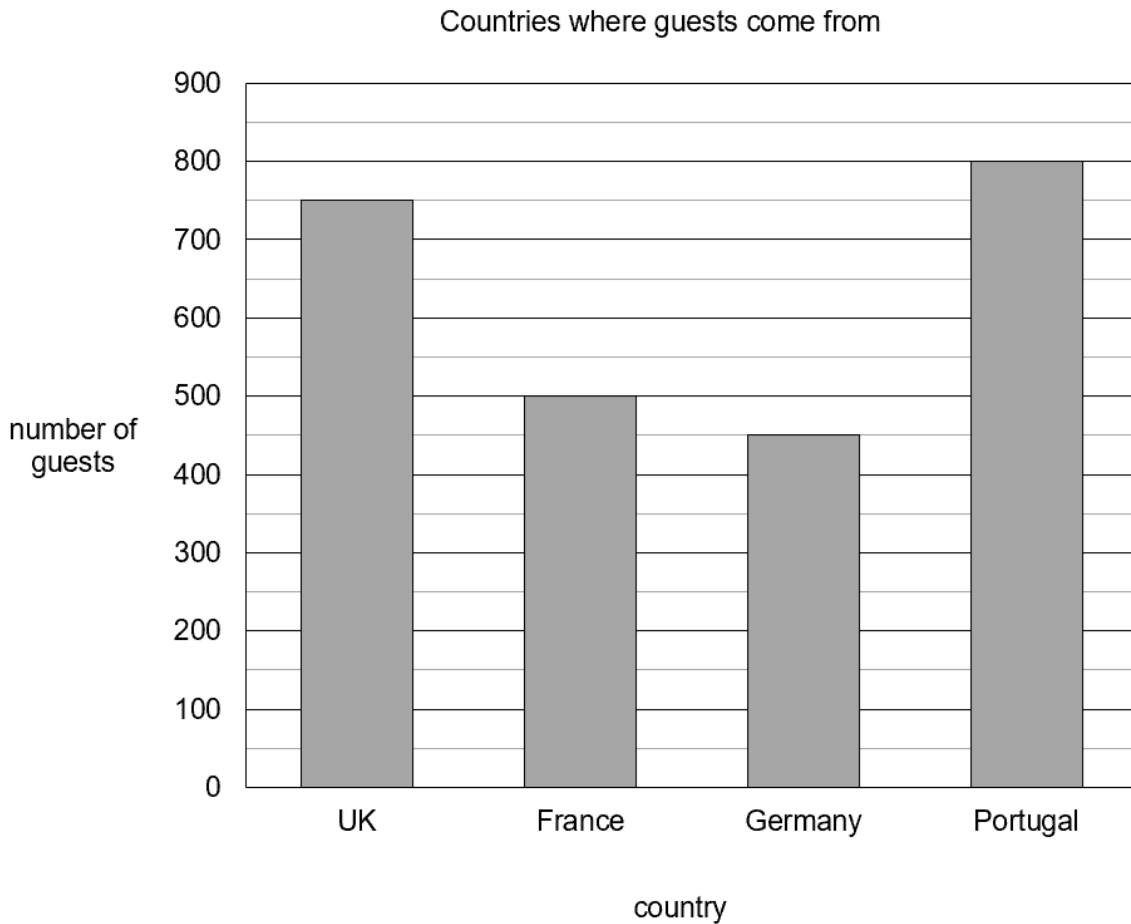
[2 marks]

Subject	Number of students
biology	120
physics	90
art	75
drama	45

5.

Claire sees this bar chart on a hotel website.

It shows the countries where hotel guests come from.



Complete the frequency table to show this information.

[3 marks]



Country	Number of guests
UK	750
France	500
Germany	450
Portugal	800

6.

Claire sees this information in the airport.

The table shows the highest temperatures in Spain over four days.

Day	Temperature (°C)
Monday	16
Tuesday	21
Wednesday	26
Thursday	18

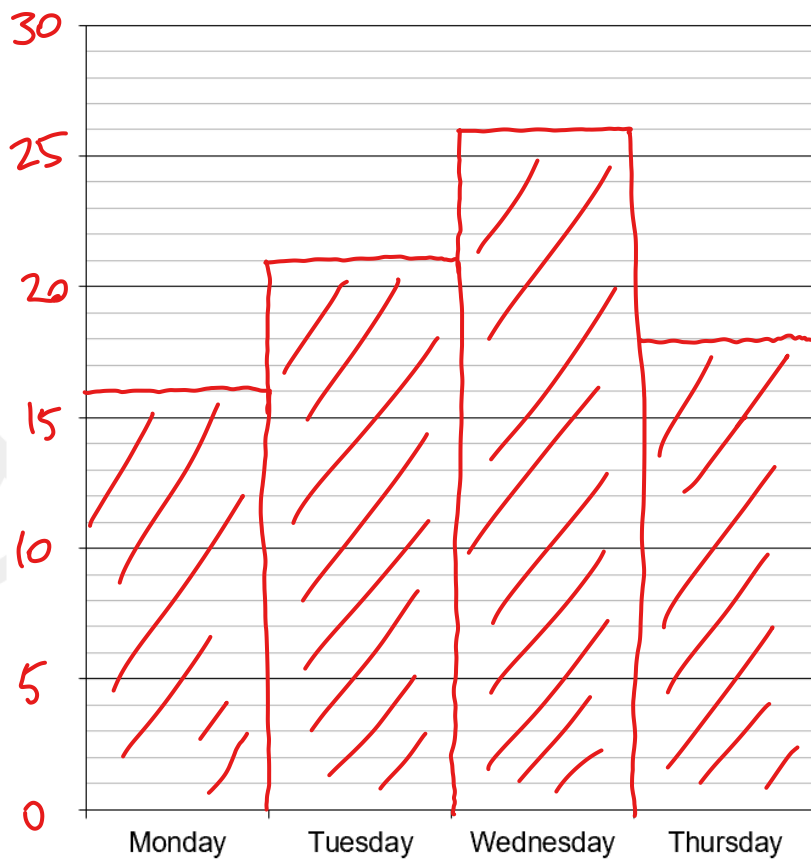
Complete the bar chart to show this information.

[3 marks]



Temperature (°C) each day in Spain

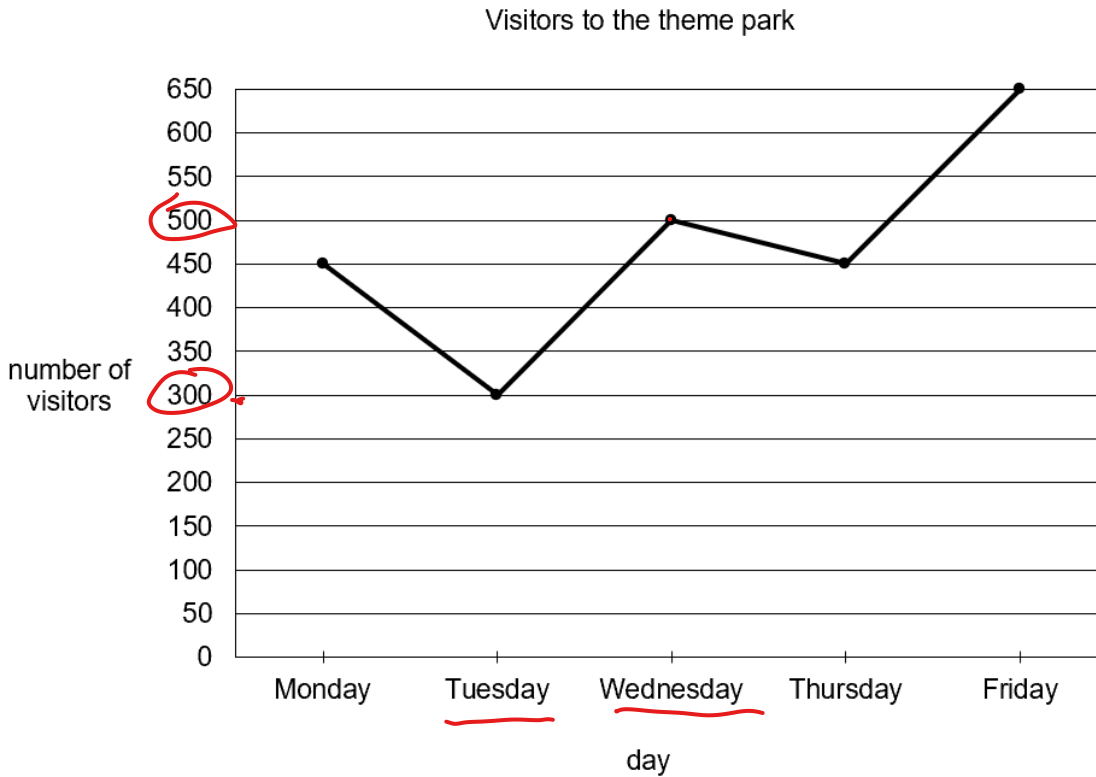
Temperature
(in °C)



Day

7.

Claire sees this line graph showing the numbers of visitors to the theme park in the past week.



She thinks there were twice as many visitors on Wednesday than there were on Tuesday.

Is she correct?

Give a reason for your answer.

[3 marks]

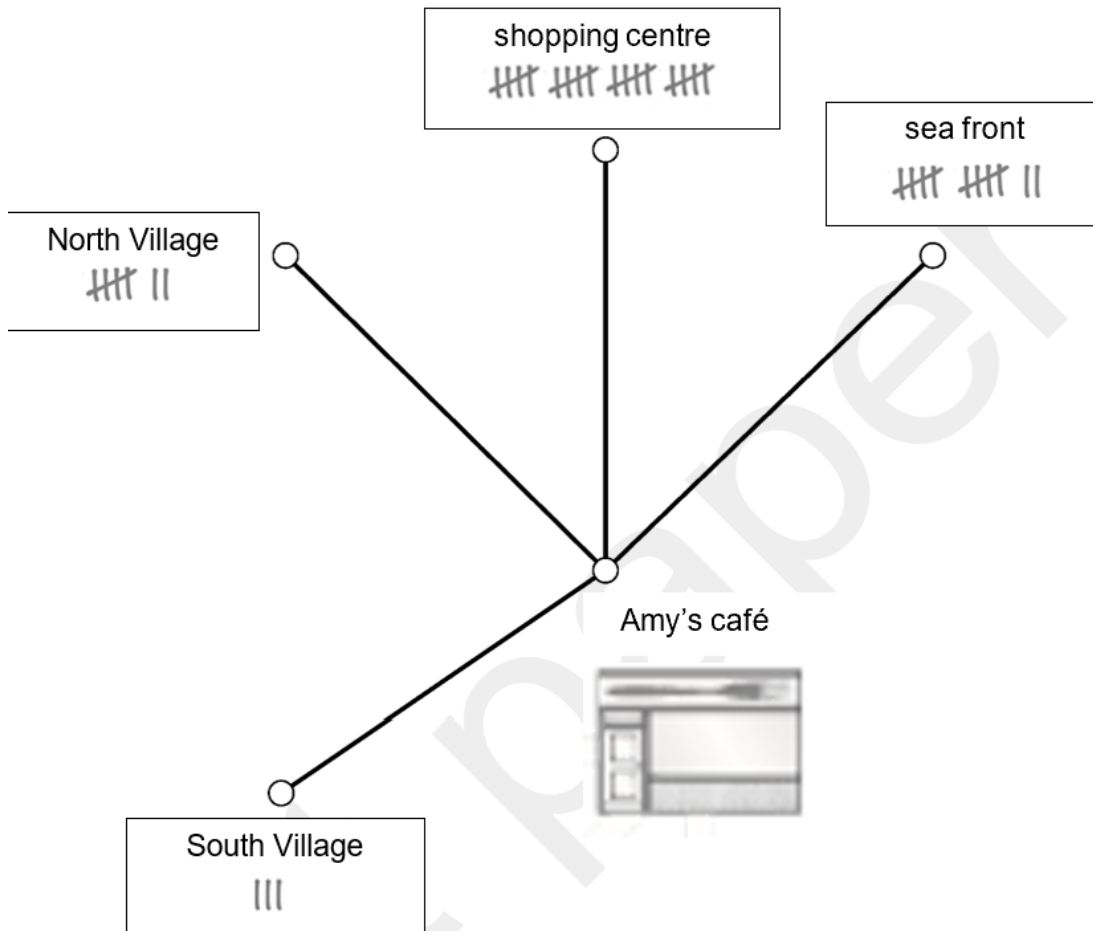


$300 + 300 = 600$
 No, double 300 is 600, not 500.

8.

This diagram shows the places the café delivers to.

It also shows a tally of the deliveries that were made to each place last week.



Complete the frequency table to show this information.

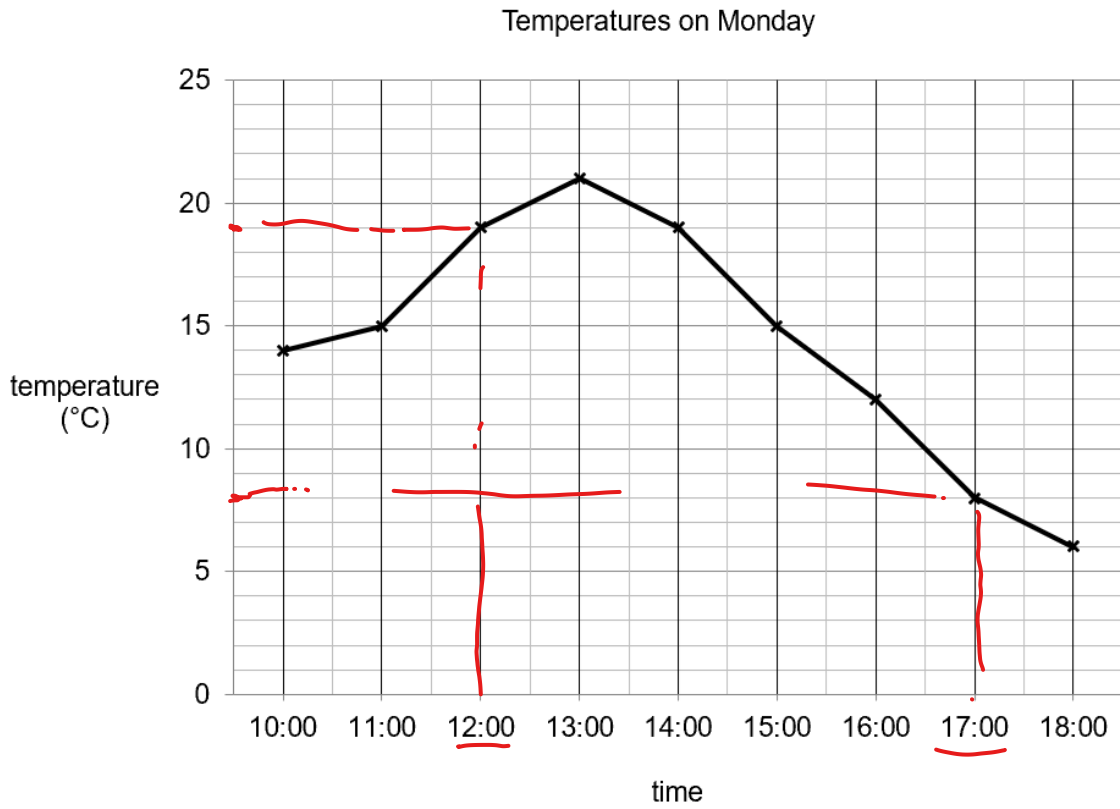
[3 marks]

Place	Frequency
South Village	3
North Village	7
shopping centre	20
sea front	12

9.

Amy checks the temperature in the kitchen.

This graph shows the temperatures in the kitchen on Monday.



How much hotter was it at 12:00 than it was at 17:00?

[2 marks]

$$19 - 8 = 11^{\circ}\text{C}$$

10.

Steven works at the dog grooming salon.

He has this list of services to be done over three days.

Monday
full groom, full groom, full groom, nail clip, bath
Tuesday
bath, nail clip, full groom, full groom, bath
Wednesday
bath, nail clip, bath, bath, full groom, full groom

Complete the frequency table to show this information.

[3 marks]

Service	Frequency
full groom	7
nail clip	3
bath	6

11.

Rachel sees this information about recycled cups at events.

Event	Number of cups recycled
Lakeside Festival	200
Tottan Flower Show	450
Meerbrook Festival	625
South East Car Show	975

Complete the bar chart to show this information.

[3 marks]

