

Non-calculator Questions

NCFE

1.

Each friend will drive to the nature reserve.

These are the distances they will drive to get there from home.

Mark	33.3 km
Jon	3.0 km
Pippa	3.3 km
Lily	33 km

Put the names in order, starting with the friend who lives nearest to the nature reserve.

[2 marks]**nearest****furthest**

Jon Pippa Lily Mark

City & Guilds

2.

A gardener needs to make a wooden post 1.8m high.
He has these lengths of wood.

A



1.3m ☐

B



1.7m ☐

C



1.9m ☒

D



0.8m ☐

Tick the piece of wood he can use.

1 mark

3.

A man lives 20 kilometres from work.

He works 6.5 kilometres from the airport.

He drives from his house to work. Then he drives to the airport.

How far does the man drive **in total**?

26.5 kilometres

1 mark

$$\begin{array}{r} 20 \\ + 6.5 \\ \hline 26.5 \end{array}$$

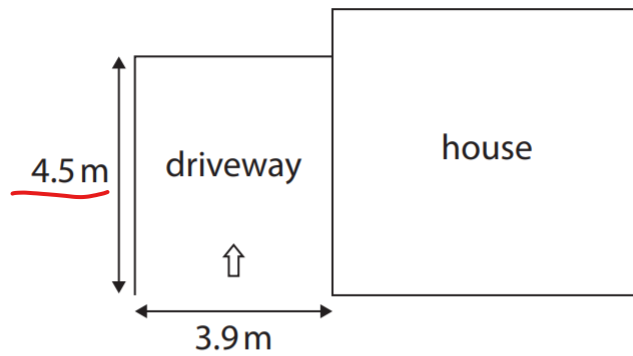
Calculator Questions

Edexcel

1.

Alex wants to buy a car.

He has a plan of his house and driveway.



Alex wants the longest car that fits his driveway.

Length of cars for sale						
car	A	B	C	D	E	F
length (m)	4.2	3.8	4.6	4.8	4.4	4.7

Which car will Alex choose?

(1)

Show your answer in the box below.

E

2.

Alex needs to buy petrol.

He goes to the nearest service station that is open.

Which service station does he choose?

(1)

☐

Tick (✓) the correct answer.

distance 7 km
closed

()

distance 19 km
open

()

distance 23 km
closed

()

distance 17 km
open

(✓)

distance 22 km
open

()

distance 15 km
closed

()

NCFE

3.

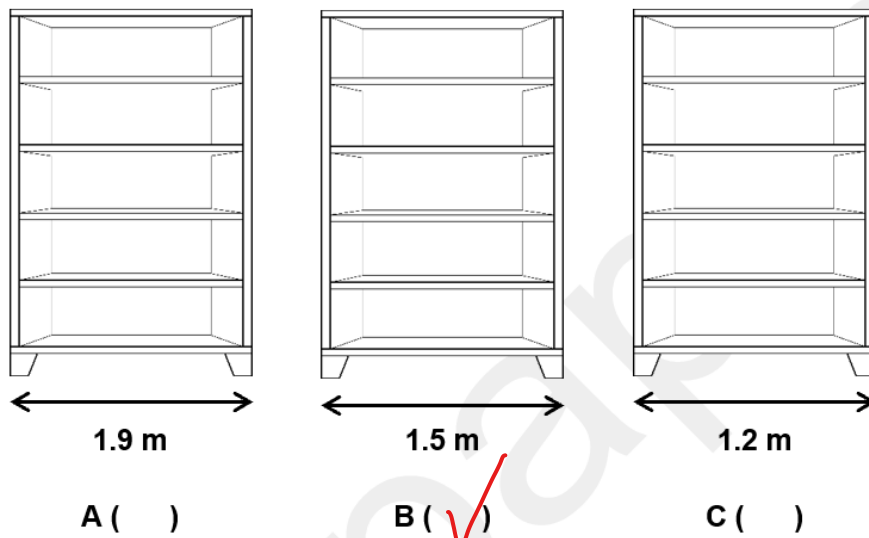
Kevin needs to move a bookcase into a gap 1.6 m wide.

He has bookcases in three sizes.

Which is the widest bookcase he can fit in the gap?

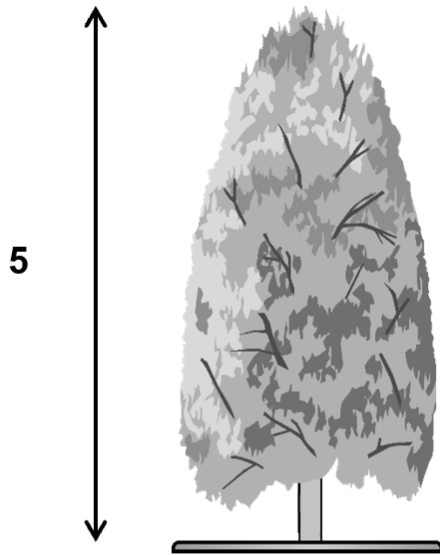
Tick (✓) your answer.

[1 mark]



4.

There is a tree in one of the fields.



What is the height of the tree?

Tick (✓) your answer.

[1 mark]

5 centimetres

A ()

5 kilometres

B ()

5 metres

C (✓)

5 millimetres

D ()

5.

Jay grows some leeks for his friends.

He measures the lengths of the leeks.

He thinks B is the longest leek.



30 cm

A



3 mm

B



30 mm

C



3 cm

D

Is Jay correct?

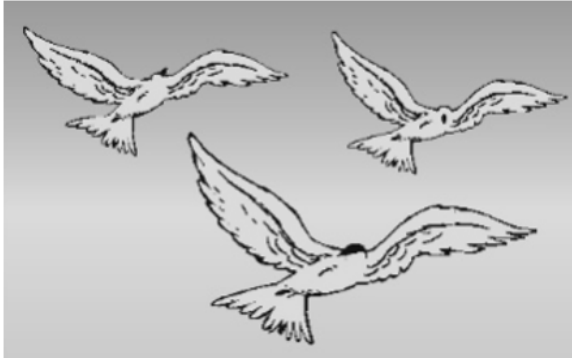
Give a reason for your answer.

[2 marks]

No, A is the longest.

6.

Jon prints a photo.



How wide is the photo?

Tick (✓) your answer.

[1 mark]

8 m
A ()

8 mm
B ()

8 cm
C (✓)

8 km
D ()

7.

Lee goes shopping.

He buys a hose longer than 15 m

Which hose does he buy?

Tick (✓) your answer.

[1 mark]



120 cm
A ()



21 m
B (✓)



200 cm
C ()



12 m
D ()

City & Guilds

8.

Write these measurements in order starting with the **largest**.

96km

3km

20km

82km

96km 82km 20km 3km

1 mark

9.

A woman will walk to the charity shop for her interview.

She checks the routes on the website. The website shows these four different routes.

She wants to take the shortest route.

Tick the route she will take.

Route A 2.4 miles ☐

Route B 2.7 miles ☐

Route C 2.2 miles ☒

Route D 2.5 miles ☐

1 mark

10.

The manager of the charity shop wants to put up a shelf.

She has three shelves to choose from.

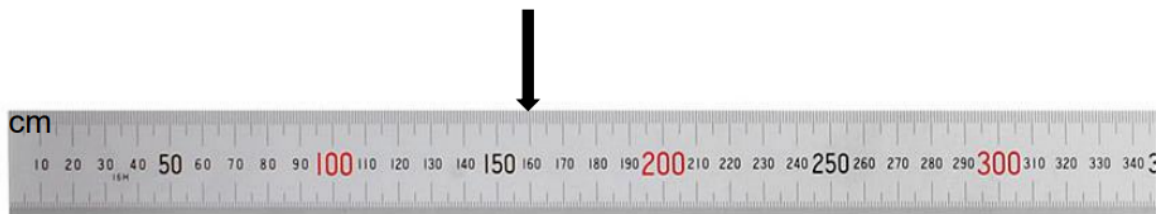
Shelf A is 130cm

Shelf B is 180cm

Shelf C is 145cm

She asks the volunteer to measure the wall.

The wall is this wide.



Which is the longest shelf that will fit on the wall?

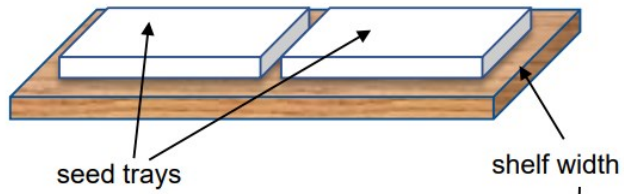
Shelf.....C.....

2 marks

11.a)

A trainee at a garden centre needs to plant some seeds.

She wants seed trays that will fit on this shelf.



She measures the width of the shelf.



23 cm

b)

The garden centre has these different size seed trays.



Tick which seed trays will fit on the shelf.
Give a reason for your answer. Use numbers to help you explain.

Reason 18 and 15 are smaller than 23 but 24 and 30 are not.

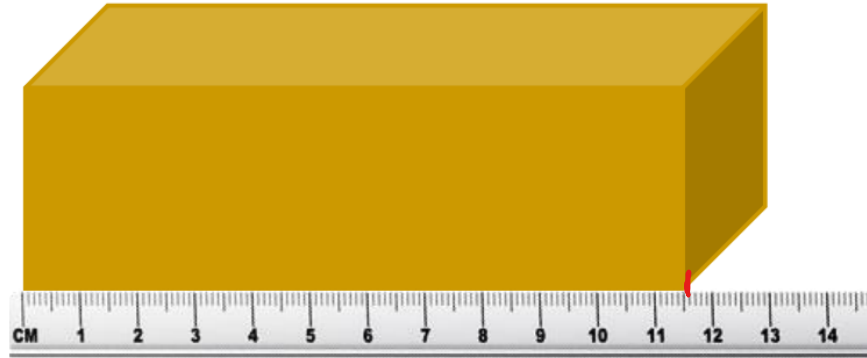
3 marks

Open Awards

12.

(2 marks)

Kali has a parcel to send.



How long is the parcel in mm?

(1 mark)

115 mm