

Non-calculator Questions

NCFE

1.

Joti works in a knitting shop.

The shop sells knitting charts like the one below.

Knitting is made from rows of stitches.

The symbols in the chart tell knitters what type of stitch to use.

The chart is a coordinate grid.

20	•	•				\								0						•	•	20		
19	•	•					\							0							•	•	19	
18	•	•						\							0						•	•	18	
17	•	•							\						0						•	•	17	
16	•	•								\						0					•	•	16	
15	•	•									\					0					•	•	15	
14	•	•										\					0				•	•	14	
13	•	•											\				0				•	•	13	
12	•	•																			•	•	12	
11	•	•																			•	•	11	
Row	10	•	•							0						/					•	•	10	Row
	9	•	•								0					/					•	•	9	
	8	•	•									0				/					•	•	8	
	7	•	•										0			/					•	•	7	
	6	•	•											0		/					•	•	6	
	5	•	•												0	/					•	•	5	
	4	•	•													0	/				•	•	4	
	3	•	•														0	/			•	•	3	
	2	•	•																		•	•	2	
	1	•	•																		•	•	1	
		17	16	15	14	13	12	11	10	9	8	7	6	5	4	3	2	1						

Tick the symbol which is in stitch 5, row 13.

[1 mark]

Your answer:

 0

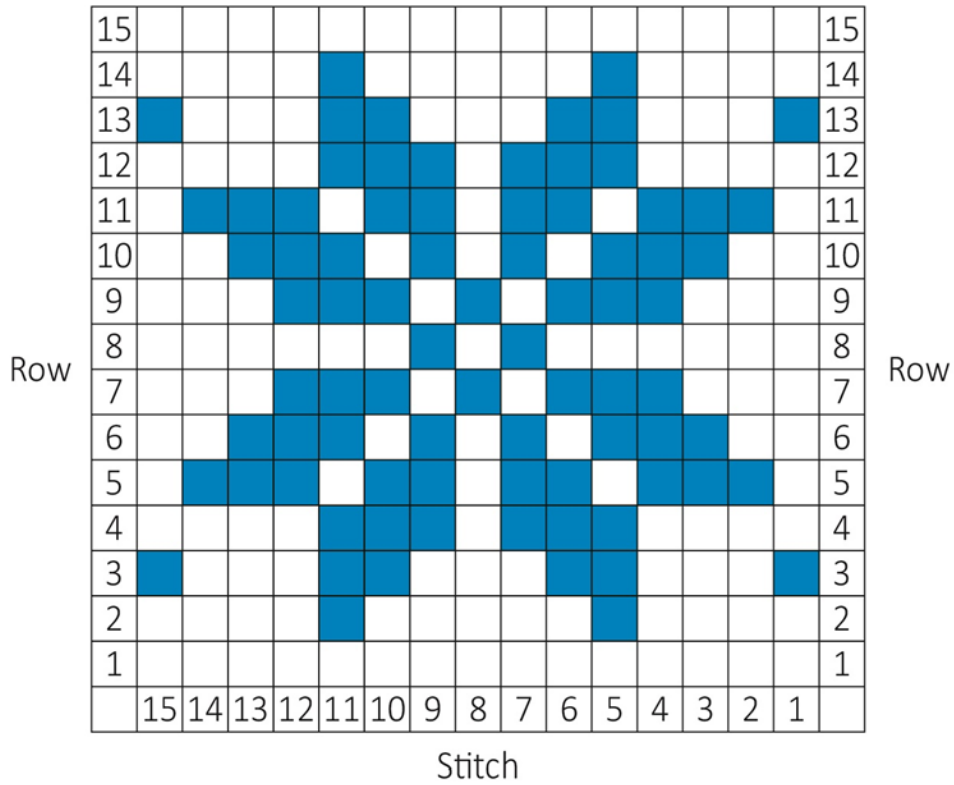
 /

 \

 •

2.

Here is a different knitting chart.



This chart tells knitters what colour wool to use for each stitch in the pattern.

Joti changes the chart.

She adds four more blue stitches to give the pattern four lines of symmetry.

Write down the coordinates of the four blue stitches Joti adds.

[2 marks]

Your answer:

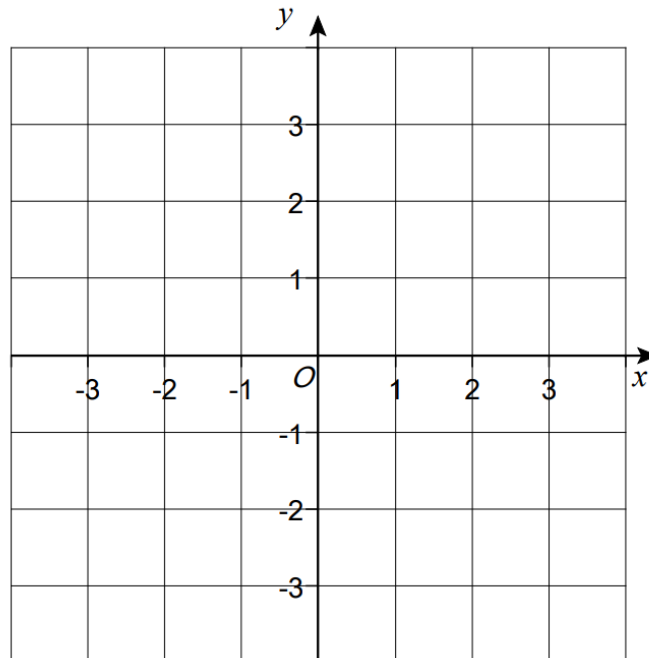
Stitch	_____	Row	_____
Stitch	_____	Row	_____
Stitch	_____	Row	_____
Stitch	_____	Row	_____

AQA

3.

Plot the point $(-3, 2)$ on this grid

[1 mark]



Calculator Questions

NCFE

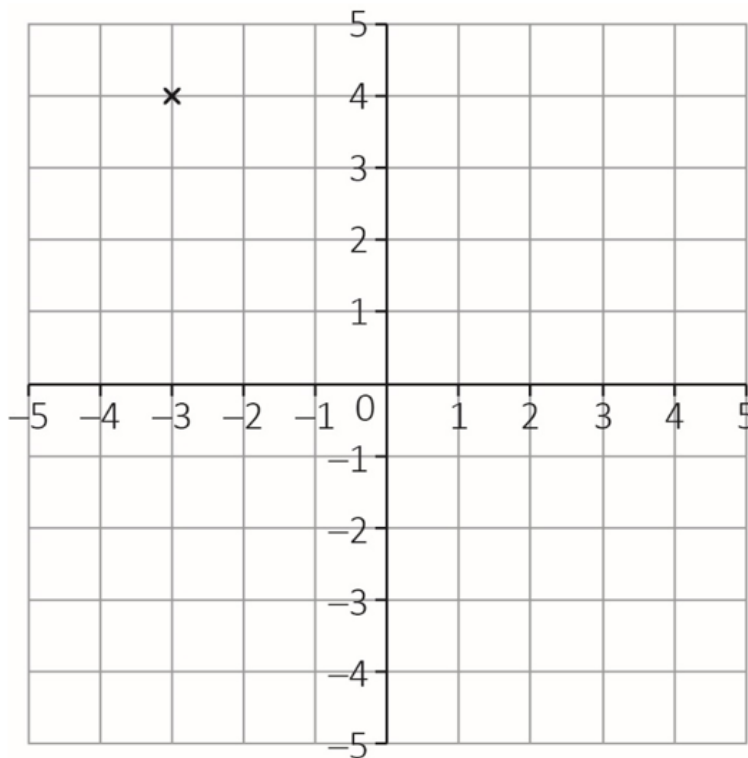
1.

Alice attends a workshop about home security.

The tutor tells the group about a house burglary.

The police found a footprint in the garden.

They used a coordinate grid to record where it was:



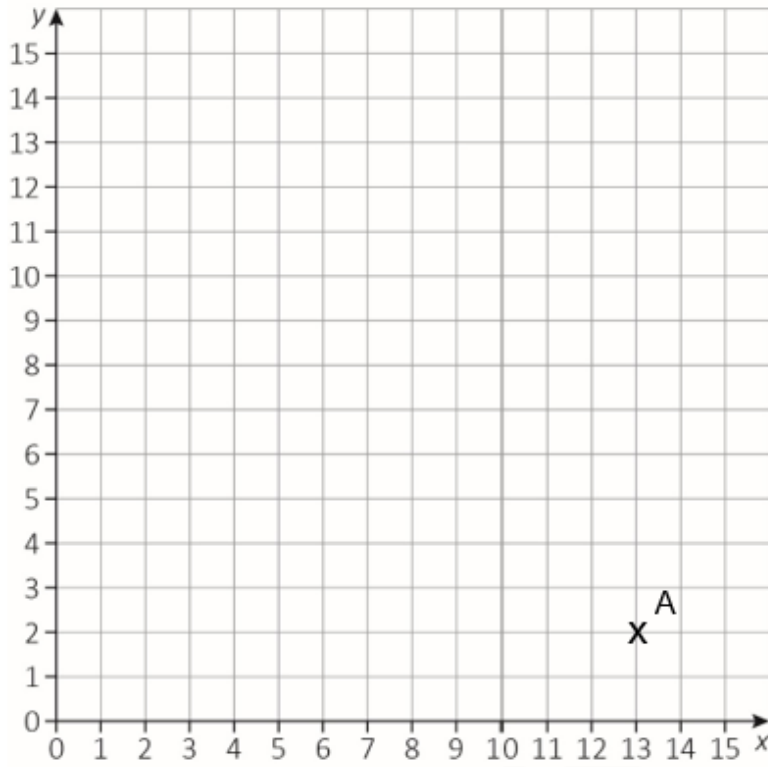
What are the coordinates of the point marked by x ?

[1 mark]

Your answer:

2.

The coordinate grid shows the floor plan of the kitchen.



Point A shows the position of the gas valve.

Write down the coordinates of point A.

[1 mark]

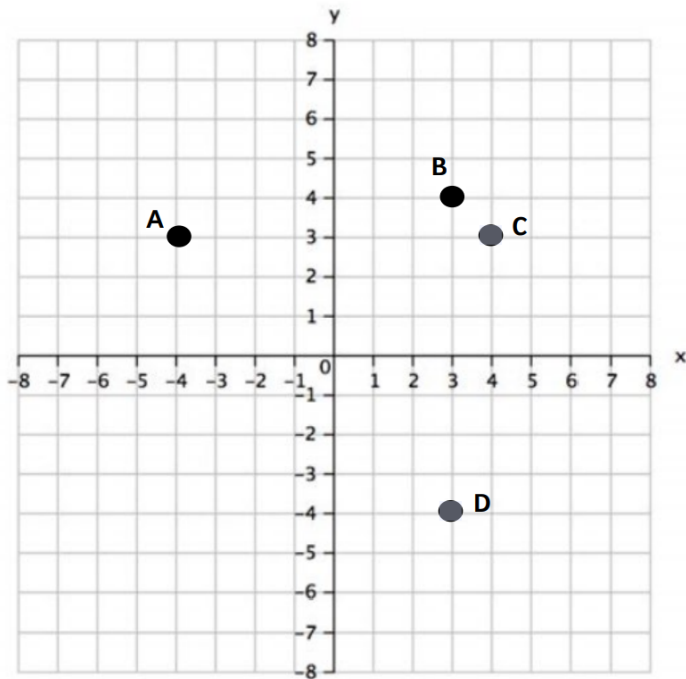
--

Your answer:

--

City & Guilds

3.



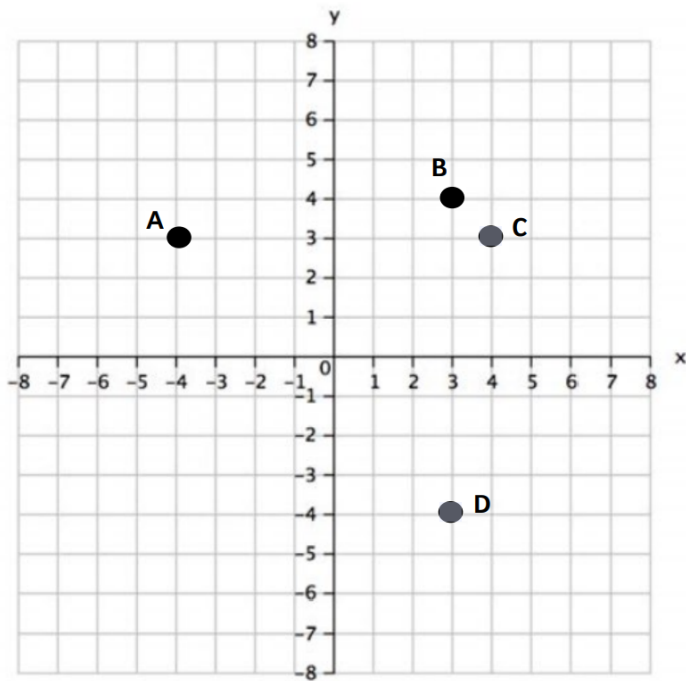
Which point is at (3,4)?

(tick one box)

- A. Point A
- B. Point B
- C. Point C
- D. Point D

(1 mark)

4.



Which point is at (3,4)?

(tick one box)

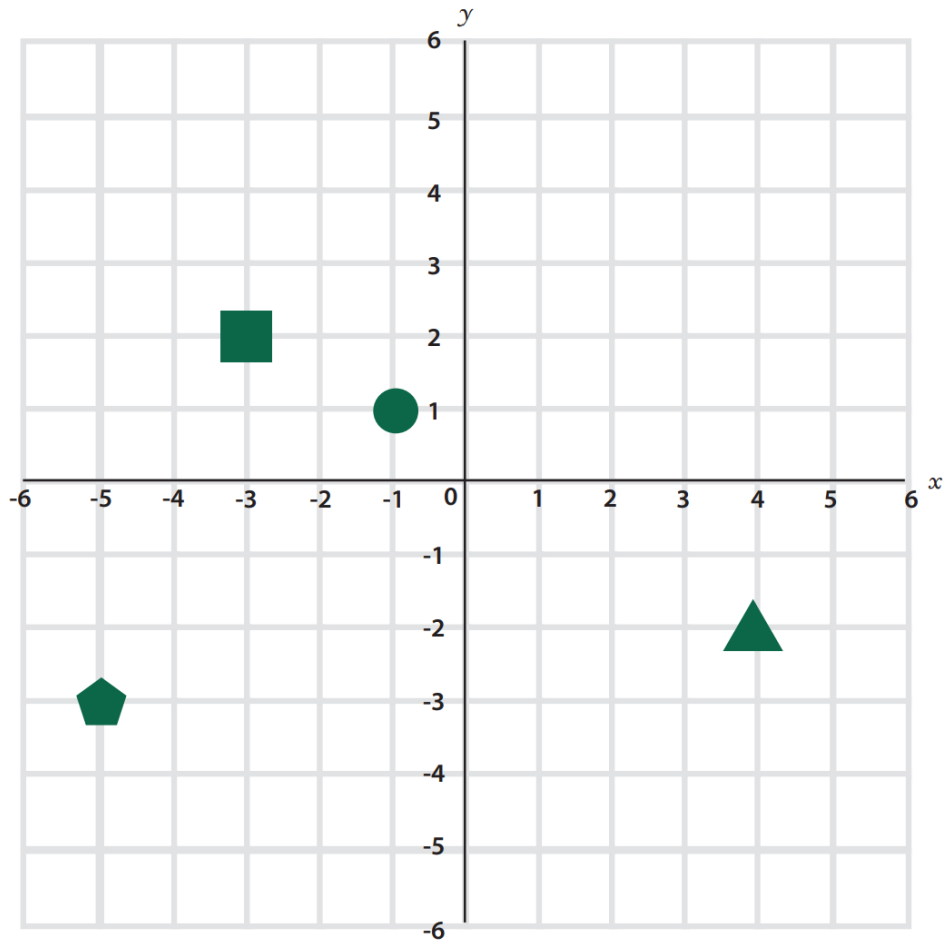
- A. Point A
- B. Point B
- C. Point C
- D. Point D

(1 mark)

Highfield

5.

What are the coordinates of the pentagon on the grid below?



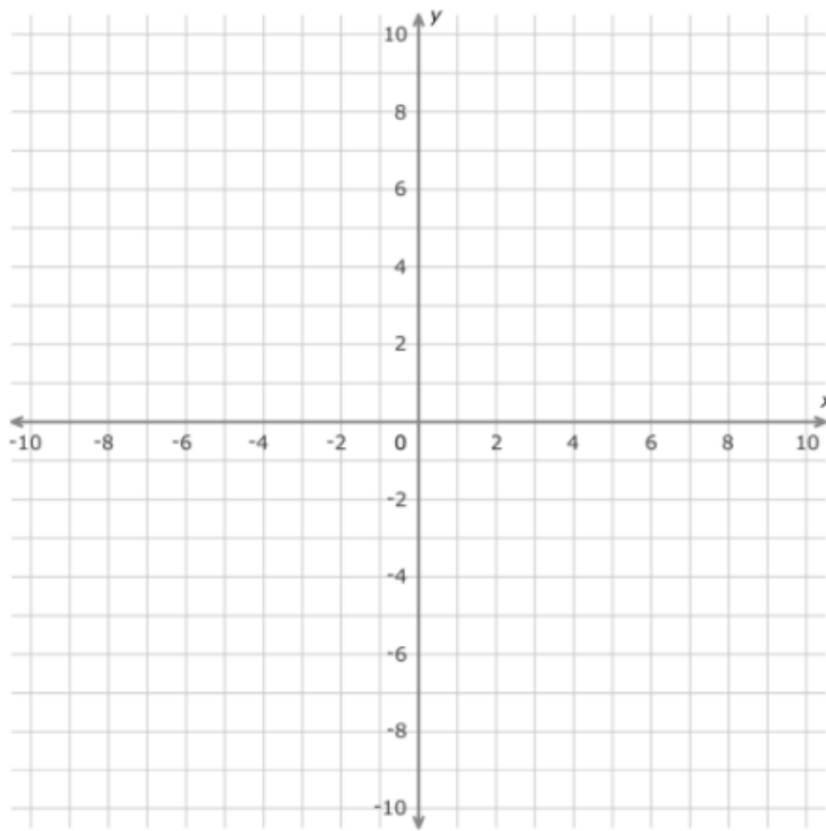
Write the answer in the box below.

(1 mark)

Answer: _____

Open Awards

6.



On the grid mark the point (4, 2).

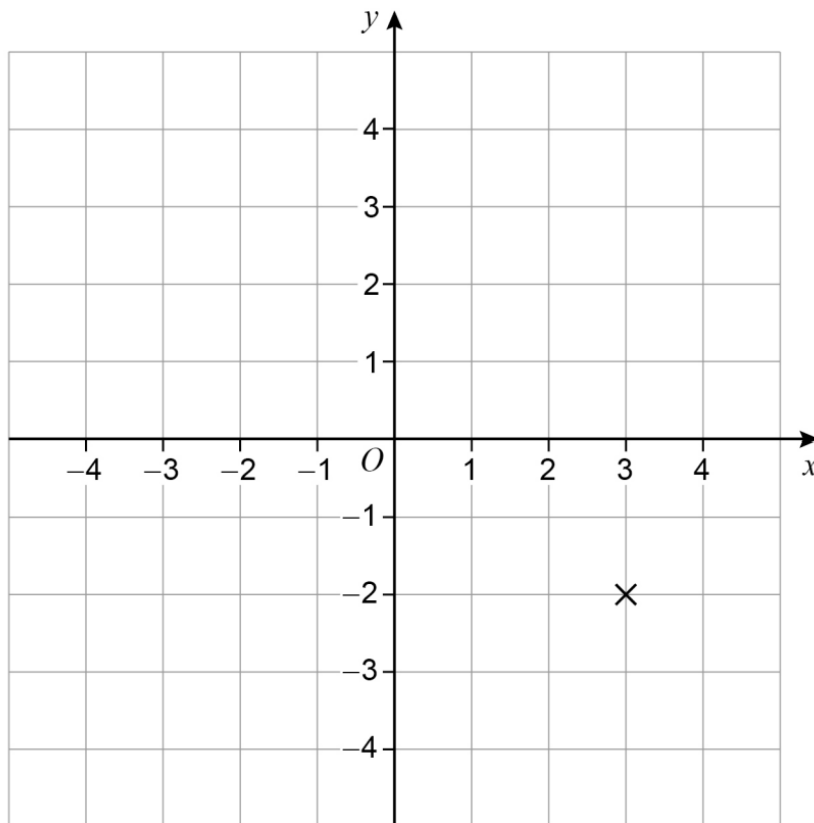
(1 mark)

AQA

7.

Write down the coordinates of the point marked X.

[1 mark]



Answer (_____ , _____)