

Non-calculator Questions

NCFE

1.

Zak is a journalist.

He is writing an article about the local weather.

This table shows the highest and lowest temperatures in Zak's town for two different years. –

Year	Lowest	Highest
2014	-3.4°C	20.3°C
2018	-0.2°C	23.4°C

Which year had the greater difference between highest and lowest temperatures?

Show how you decide.

[1 mark]

Your answer:	

2.

Hannah wants to make some money by buying items at a car boot sale, and then selling them.

The table shows the items that Hannah has recently bought, and then sold.

She records the profit (+) or loss (-) that she made on each item.

Item	Profit or Loss
Blue bowl	+£2.85
China dog	-£5.35
Set of teaspoons	+£4.95
Small table	-£4.25
Lamp	+£2.70

What was the total profit or loss that Hannah made when she sold these items?
Give your answer in £

[2 marks]

Your answer:

£

Profit

or

£

Loss

3.

Jessie lets a unit with a floor area of 40 m^2 for 12 months.

The unit costs £27.59 per m^2 per month.

What is the total cost of letting this unit for 12 months?

[2 marks]

Your answer:	£

4.

Tarah had 1.795 million followers in 2020

Her closest competitor had 2.846 million followers in 2020

Work out $2.846 - 1.795$

[1 mark]

Your answer:	

5.

Emma has been asked to organise an office move.

The health & safety guidelines recommend a minimum area of 9.75 m^2 for each employee.

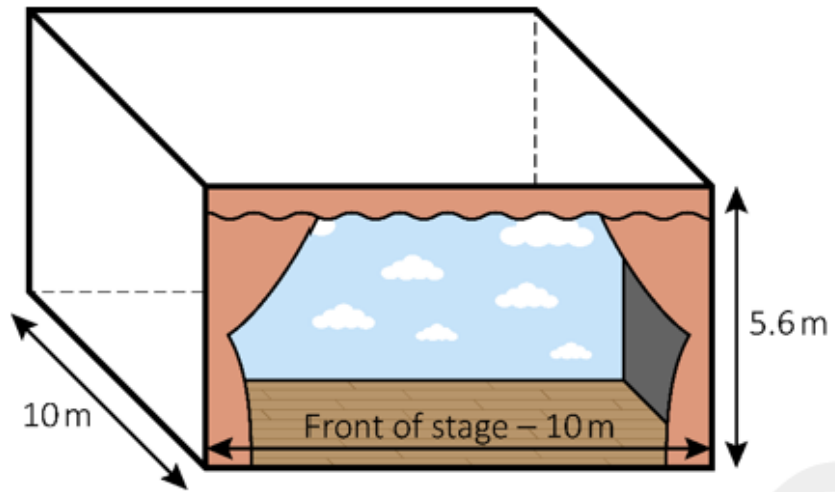
Calculate the area required for 27 employees.

[2 marks]

Your answer:	m^2

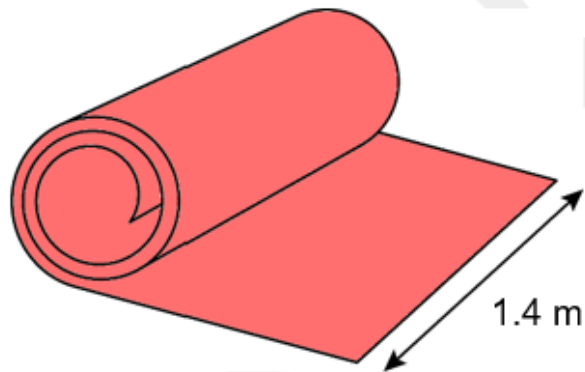
6.

This is a diagram of the stage:



The total width of fabric needs to be $3\frac{1}{5}$ the width of the stage front.

Curtain fabric is sold in widths of 1.4 m



Several widths of fabric are sewn together to make the curtains.

The length of the curtains needs to be 5.8 m to allow for hems.

What length of fabric does she need?

[3 marks]

Your answer: <input style="width: 300px; height: 30px;" type="text"/>
m

City & Guilds

5.

$$147.206 - 95.438 =$$

(1 mark)

6.

$$4.50 \div 0.05 =$$

(1 mark)

7.

$$531 \times 1.4 =$$

(1 mark)

8.

$$18.369 + 3.197 - 2.475 =$$

(1 mark)

Highfield

9.

Calculate 6.4×8.5

Show your working out and write the answer in the box below.

(2 marks)

Answer: _____

AQA

10.

Work out $7 - 2.835$

[1 mark]

Answer _____

Calculator Questions

City & Guilds

1.

The surface area of a sphere is $4\pi r^2$

A sphere has a radius (r) that measures 3cm

Use $\pi = 3.142$

or $\pi = \frac{22}{7}$

Work out the surface area of the sphere to the nearest cm^2 .

- A. 15cm^2
- B. 22cm^2
- C. 113cm^2
- D. 1421cm^2

(1 mark)

2.

Which of these has the smallest value?

(tick one box)

- A $6.048 \div 24$
- B $0.095 \div 5$
- C $1.032 \div 12$
- D $1.274 \div 7$

(1 mark)

Highfield

3.

The tallest point in England is 3209ft above sea level.

The lowest point in England is -9.8ft below sea level.

What is the difference between the tallest and lowest points in England?

Write the answer in the box below.

(1 mark)

Answer: _____ ft

AQA

4.

Work out $\frac{9.386 + 20.904}{2.5}$

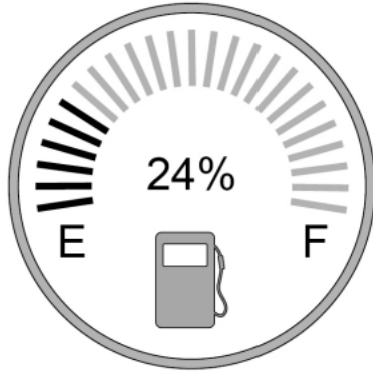
Give your answer as a decimal

[1 mark]

Answer _____

5.

Lucas looks at his car's petrol gauge and decides to fill up the petrol tank.



The petrol tank holds 70 litres when full.

Petrol costs 126.8p per litre.

How much does Lucas pay to fill up the tank?

[4 marks]

Answer £ _____