

**Non-calculator Questions**

NCFE

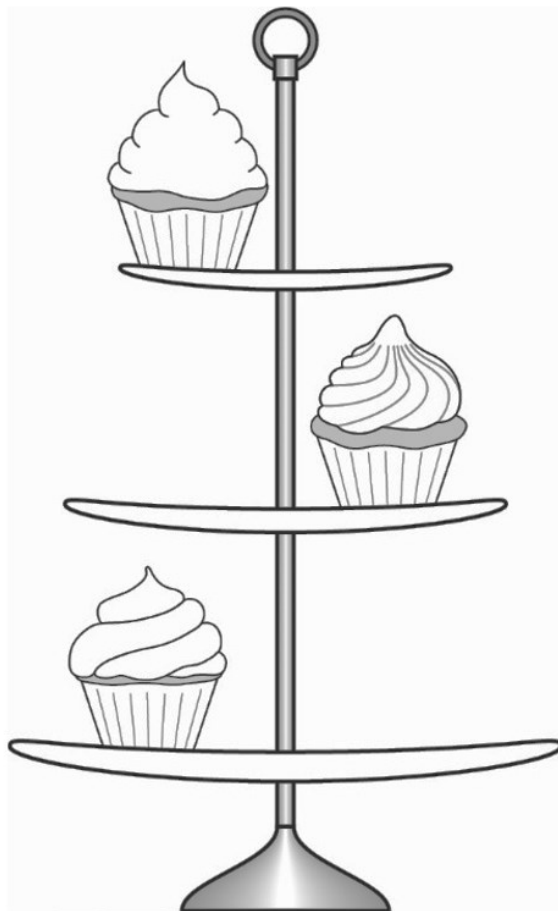
1.

Daisy buys a cake.

She buys the cake on the top tier of the cake stand.

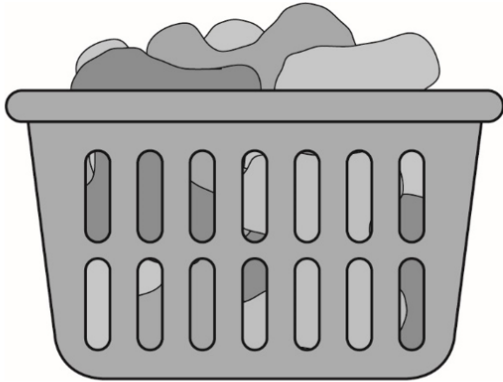
**Tick (✓)** the cake on the top tier of the cake stand.

**[1 mark]**



2.

Kay washes these clothes.



Where are the clothes?

Tick (✓) your answer.

[1 mark]

outside  
of the basket

**A (   )**

on top  
of the basket

**B (   )**

inside  
the basket

**C (   )**

below  
the basket

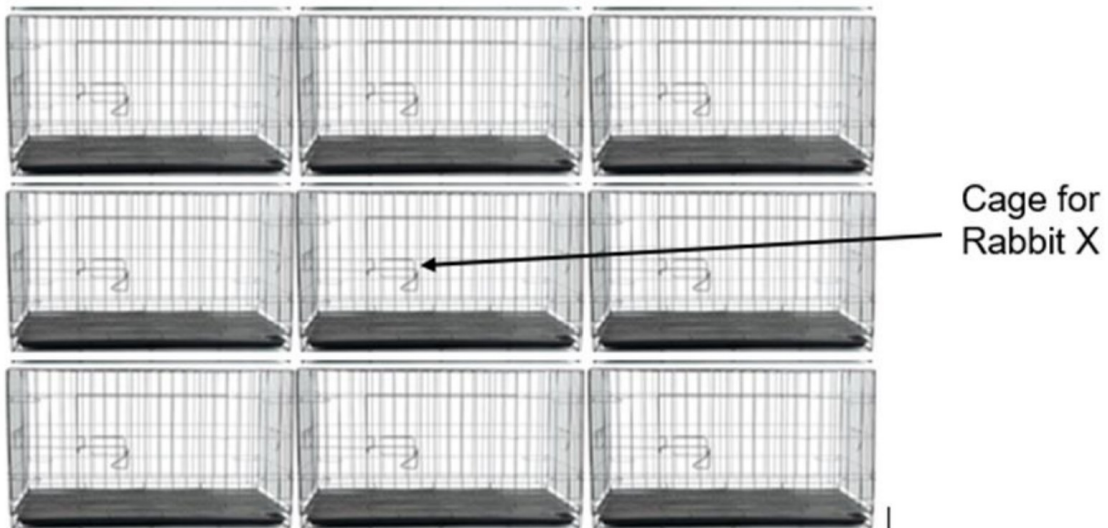
**D (   )**

City & guilds

3.

The vet clinic has cages for the animals to stay in for their treatment.  
The vet asks the nurse which cage Rabbit X will go in.

This diagram shows a plan of the cages.



What does the nurse tell the vet? **Finish the sentence.**

Rabbit X will go in the cage .....

**1 mark**

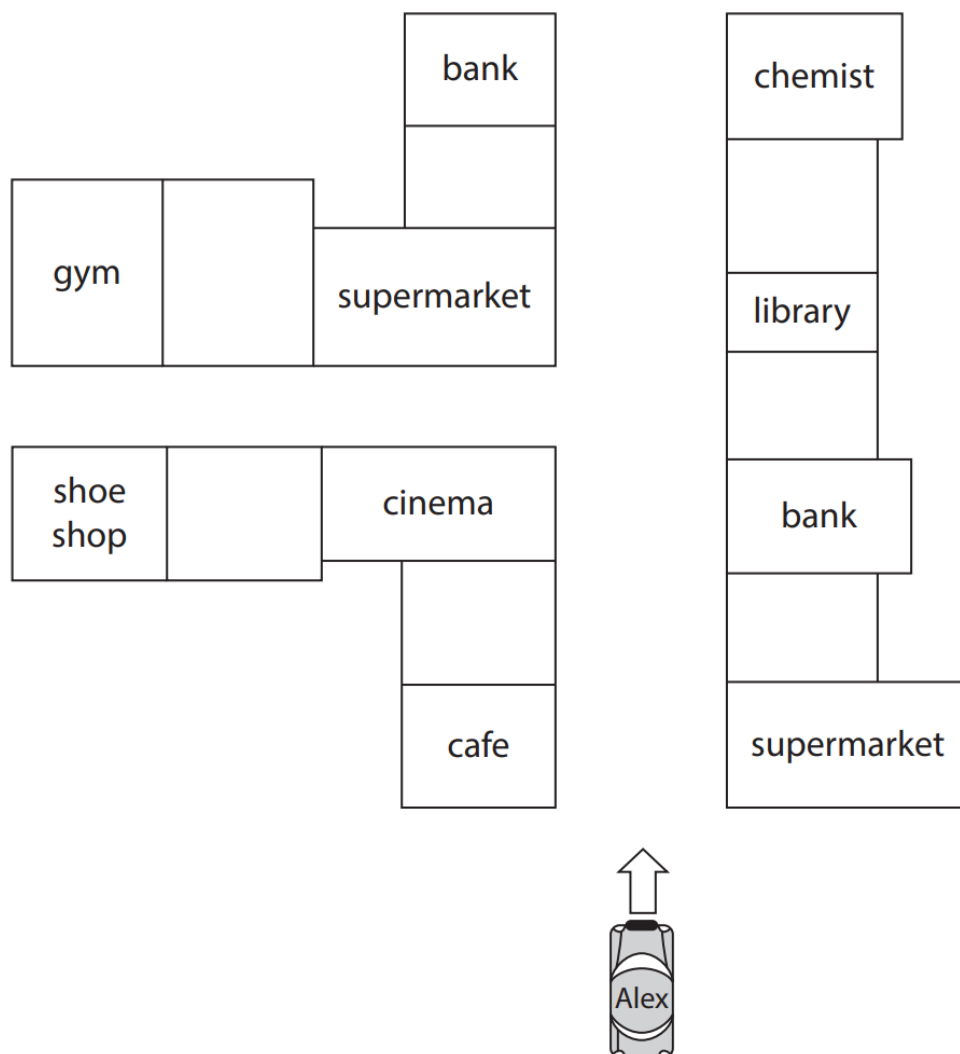
### Calculator Questions

Edexcel

1.

Alex takes his car to a garage.

He has a street map.



The garage is on the left between a supermarket and a bank.

**Show where the garage is on the map.**

(1)

2.

Lucy fits shelves on a wall.

She needs to change the middle shelf.

**Which is the middle shelf?**

(1)

☐

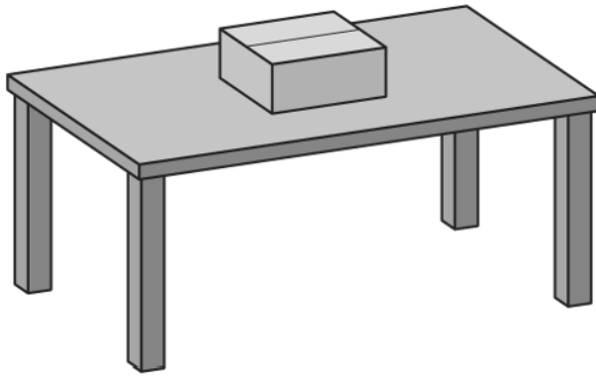
Show your answer on the diagram.



NCFE

3.

Ruby has a box of DVDs.



Where has she put the box?

**Tick (✓) your answer.**

**[1 mark]**

below the table

between the table legs

on top of the table

**A (   )**

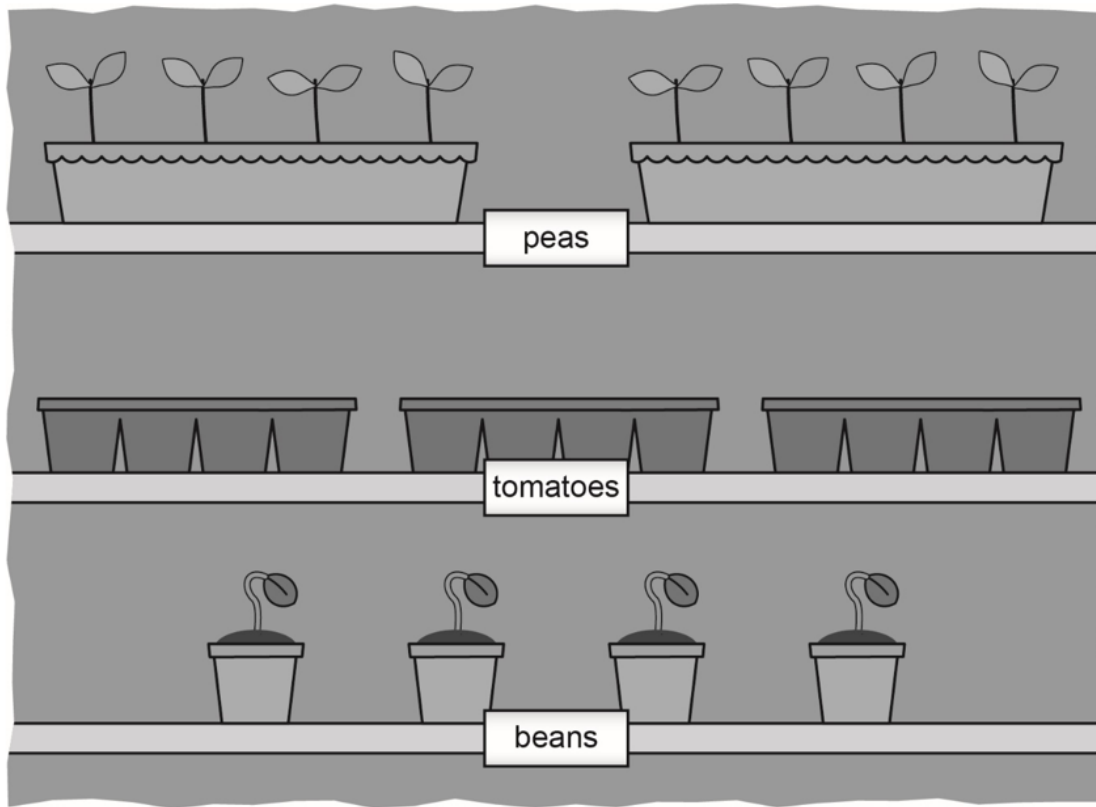
**B (   )**

**C (   )**

4.

Jay plants tomatoes in trays.

He puts the trays on a shelf.



Where does he put the trays of tomatoes?

Tick (✓) your answer.

[1 mark]

behind  
the peas

A ( )

below  
the peas

B ( )

on top  
of the peas

C ( )

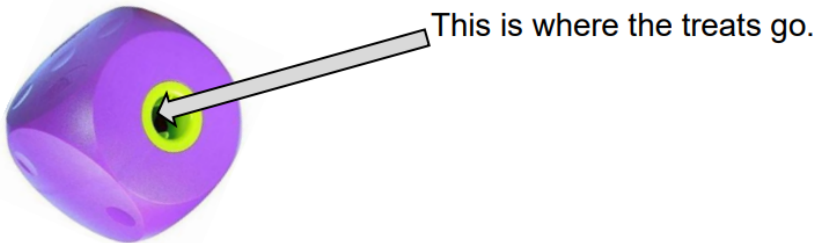
between  
the peas

D ( )

5.

The vet's assistant shows the customer a dog feeding toy they sell.

The customer asks if he can use the bone treats with the toy.



What does the vet's assistant tell the customer?  
**Finish this sentence.**

You can put the bone treats..... the toy.

**1 mark**

6.

A customer wants to buy a vase.  
He asks a volunteer if they have a vase.

These items are displayed on a shelf.



The volunteer tells him where the vase is.

Complete the sentence to show what the volunteer told the customer.

There is a vase on the shelf..... the candlesticks and  
the mirror.

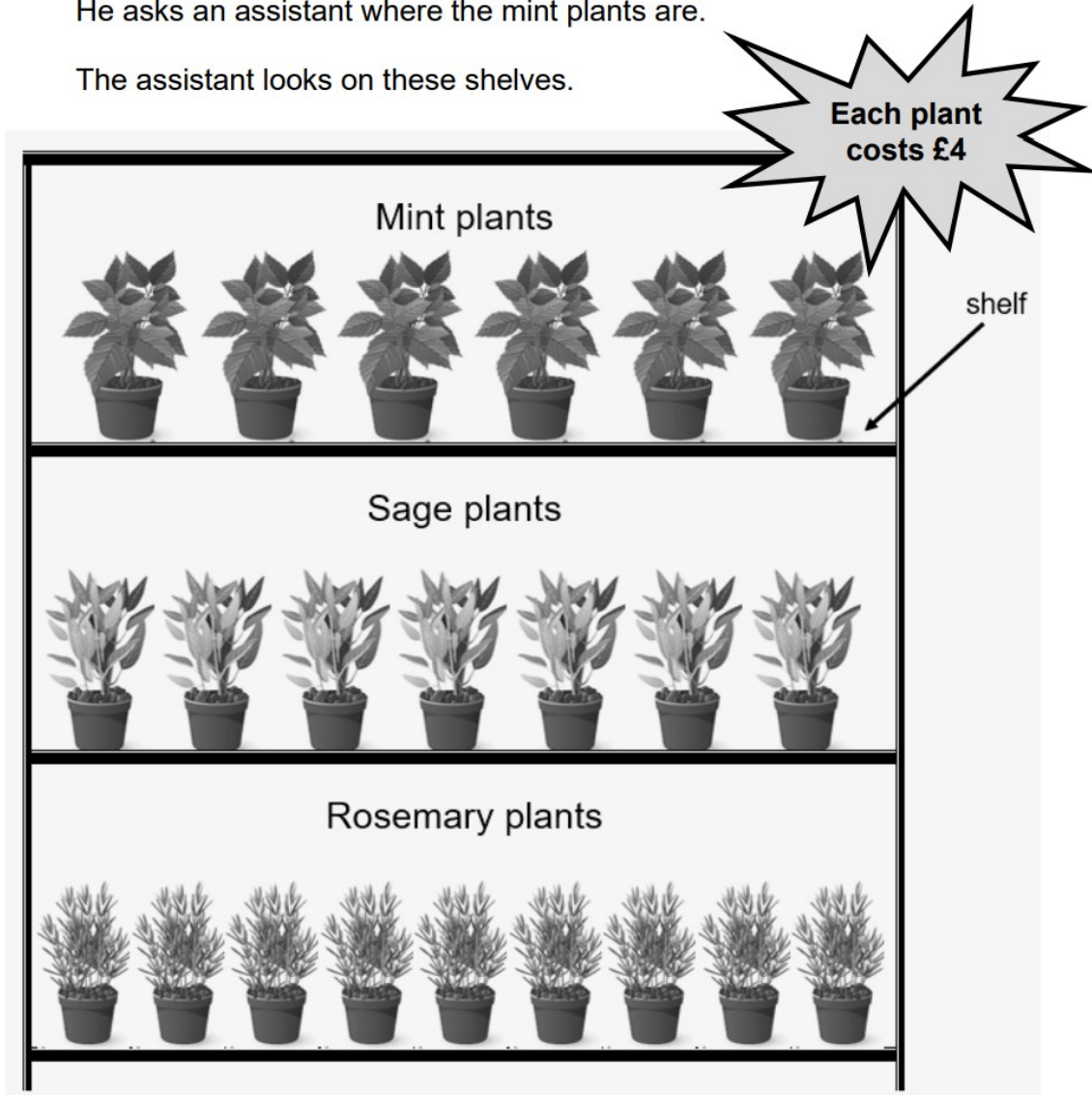
**1 mark**



7.a)

A customer wants to buy some sage plants.  
He asks an assistant where the mint plants are.

The assistant looks on these shelves.



What does the assistant say?  
**Finish the sentence.**

The sage plants are on the ..... shelf.

**1 mark**

b)

The customer has this amount of money



How much money does he have?  
**Give units with your answer.**

Show your working out.

Amount of money

**2 marks**

c)

He buys 7 plants from the shelves.

How much money will he have left?

Show your working out.

Amount left £ .....

2 marks

8.a)

A passenger's flight leaves at **one o'clock**.  
He checks his watch.



Has his plane left?

**Give a reason for your answer. Use the clock time to help you.**

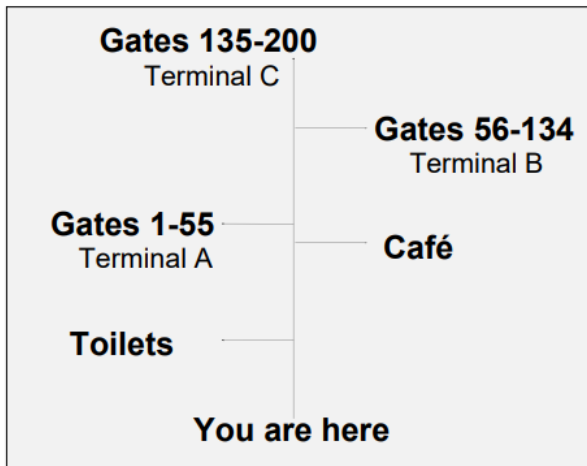
Yes/No .....

Reason.....

1 mark

b)

His flight leaves from Gate 128. This sign shows the Gates at the airport.



In which terminal is **Gate 128**?

Terminal.....

**1 mark**

Open Awards

9.

**(1 mark)**

Kevin will write the address **on the top** of the parcel.

Put a **cross** on the top of the parcel to show where the address will go.

